



# St. Mary's Catholic Church

A parish of Ampleforth Abbey

25 Bond End, Knaresborough, HG5 9AW

Fr. William Wright O.S.B. [william@ampleforth.org.uk](mailto:william@ampleforth.org.uk)

Tel: 01423 862388

E-mail: [parish@stmarysknaresborough.org.uk](mailto:parish@stmarysknaresborough.org.uk) Web: [www.stmarysknaresborough.org](http://www.stmarysknaresborough.org)

## CELEBRATIONS AND MASS INTENTIONS FOR THE WEEK

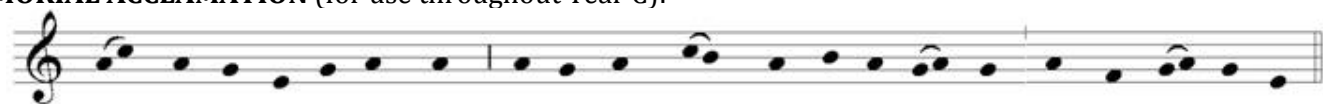
13<sup>th</sup> Week of Ordinary Time 2013

Sunday cycle C/weekday cycle I

Day	Rank	Mass times	Mass Intention
Sun 30 <sup>th</sup> June	<b>SOLEMNITY: SAINTS PETER &amp; PAUL, APOSTLES</b>	Vigil 6.00 pm	<b>Fr Abbot</b>
		10.00 am	<b>Parish</b>
		5.00 pm	
Mon 1 <sup>st</sup> July	<b>Feria</b>	9.00 am	<b>Bridget &amp; Eddie Bradley</b>
Tue 2 <sup>nd</sup> July	<b>Feria</b>	7.00 pm	
Wed 3 <sup>rd</sup> July	<b>FEAST: St. Thomas, Apostle</b>	9.00 am (Liturgy of the word and communion)	
Thu 4 <sup>th</sup> July	<b>Feria</b>	No service	
Fri 5 <sup>th</sup> July	<b>Feria</b>	7.00 pm	
Sat 6 <sup>th</sup> July	<b>Feria</b>	10.00 am	<b>Special Intention</b>
Sun 7 <sup>th</sup> July	<b>14<sup>th</sup> SUNDAY IN ORDINARY TIME</b>	Vigil 6.00 pm	<b>Parish</b>
		10.00 am	<b>Ruby &amp; Hugh Perry</b>
		5.00 pm	

**Eucharistic minister prayer:** As we thank God for the gift of his Son to us in Holy Communion, let us remember those of our parish who are sick, old and housebound. May the Body and Blood of your Son, which we now send to them through our Eucharistic ministers, bring them hope, consolation and peace, through Christ our Lord.

**MEMORIAL ACCLAMATION** (for use throughout Year C):



Save us, Sav-iour of the world, for by your Cross and Res-ur-rec-tion you have set us free.

**SACRAMENT OF RECONCILIATION** (Confession) on Saturday 5.15-5.45pm, and by request at other times.

**ADORATION:** Each weekday beginning 45 minutes before Mass **THE DIVINE OFFICE** is recited twenty minutes before each weekday Mass

**PRAYER GROUP** Wednesday 7.25pm (Healing Prayer Group) Adoration, Lectio Divina, then prayers for inner or physical healing as required. For more information please contact Maureen 869264

**WEDDING ARRANGEMENTS SHOULD BE MADE AT LEAST SIX MONTHS IN ADVANCE:** Couples asking for marriage over the next year or so should contact Fr William as soon as possible.

**BAPTISM:** If you are asking to have your baby baptised in the next few months, and have not received any instructions on the Sacrament of Baptism, please contact Fr William.

**IN YOUR PRAYERS, PLEASE REMEMBER:** Joan Akroyd, Maureen Bickford, Brian Buckley, Alma Corrie, Michael Crowe, Ian Dawson, David Doling, Jessica Ellerker, Pat Eve, Brian Greaves, Philip Hall, Eileen Hawkes, Rosemary Hill, Dot McEvoy, Myrtle McEvoy, John O'Neill, Mariana Robinson, Stephen Thorndike, Vitoria Windsor and all who are ill and those who care for them.

**WE REMEMBER** Anatole Ostaschuck, Bridget Bradley, Kate Agnes Mackown, Roy Tierney, Lilian O'Brien, Esther Henry, Thomas Renton, Honor Philbin, William Scholes, Robert Lund, Ann Maude, Theresa Moon and all whose anniversary of death occurs at this time.

**PLEASE REMEMBER:** We do **NOT** have use of St John's car park on **Sunday mornings**. Please respect this.

### THE HOLY FATHER'S MISSION INTENTIONS

That where secularisation is strongest, Christian communities may effectively promote a new evangelisation.

AMPLEFORTH ABBEY TRUSTEES REG. CHARITY NO. 1026493



## 13<sup>th</sup> SUNDAY IN ORDINARY TIME

### EVENTS AND NOTICES

**SUNDAY RESPONSORIAL PSALM** (Vigil 6.00 pm & 5.00pm) Repeat after cantor and after each verse



The an - gel of the Lord res - cues those who re - vere him.

**ST MARY'S GARDEN PARTY & BBQ:** Sunday 30 June 11.30 – 2.30pm. See poster in the Atrium for more details. Tickets on Sale after mass. Adults £5.00, Children £2.50

**THE CHAPEL OF OUR LADY IN THE CRAG** will be open on Sunday 30<sup>th</sup> June from 11.00am until 4.00pm, with brief talks on the hour from 12 noon, in conjunction with Knaresborough's Medieval Sunday.

**BROTHER TITUS OSB**, who was with us from Ampleforth from Tanzania, on a parish placement with Fr George, is to be ordained priest on 11<sup>th</sup> July. Please remember him in your prayers. If anyone wishes to send greetings please leave them, marked Fr Titus, on the letter board by 30<sup>th</sup> June.

**ANNUAL FOUNTAINS ABBEY MASS** this year will be 12 noon Thursday 11<sup>th</sup> July, the Feast of St Benedict. Fr William Wright OSB, Parish Priest, St Mary's Church, Knaresborough will be the principal celebrant. Admission is free to National Trust Members and the Trust has allowed free admission is to those attending the Mass.

**NEXT DEANERY DAY** of Renewal is on Saturday 13<sup>th</sup> July.

**FR THOMAS RATHAPPILLIL** has been invited to join us for all three Masses this weekend including the Family Mass Sun 10am, and to give a presentation and make an appeal to support his work in India. He will tell us more about his work and hopefully show us some pictures. I hope he will also join us for our Parish Barbecue and Picnic where there will be opportunities to offer him our hospitality and ask questions about his life and work in India.

**LOURDES** Jess, Marie and Luke would like to thank the parish for their generous sponsorship; please be assured of their prayers during the pilgrimage. The draw for the chocolate hamper will take place after the 5pm Mass this Sunday; last chance to buy tickets at this weekend's Masses. If anyone would like to send a prayer petition Jess, Marie or Luke would be happy to place it at the Grotto.

**DIOCESAN DIRECTORY** I need to make any changes in our entry to the Leeds Diocesan Directory 2014 before their 20<sup>th</sup> July deadline. I'm proposing to change Confessions time from Sat 5.15pm – 5.45pm to Sat 11.00am - 11.30am which may be more convenient for people in general. Any feedback on this proposal would be welcome. Also our Confraternities are listed in the directory as follows and would ask you to check if this is accurate: J & P, Archconfraternity of St Stephen, Children's Liturgy Group, Family Life Ministry, Pastoral Group.

**UNWELL** There are still some names on the list of those we pray for as unwell that I don't have details for. If anyone has these details for people on our prayer list please would you fill me in with details, either by email [william@ampleforth.org.uk](mailto:william@ampleforth.org.uk) or otherwise. Thanks.

**WORLDWIDE MARRIAGE ENCOUNTER** supports married couples or those considering catholic marriage through weekend encounters. All 'Marriage Encounter' and 'Engaged Encounter' weekends rely on volunteer couples and priests to function. If you would like to consider volunteering please visit [www.wvme.org.uk](http://www.wvme.org.uk) or tel 01538 385801. At a time when the sanctity of marriage is under threat your support will be most welcomed.

**WEEKLY COLLECTIONS:** w/e 23 June: Plate £263.90, envelopes £192.00, votive £7.54, Offertory standing orders (weekly average) Gift aided £460, non Gift aided £17. Attendance 674

**RELIGIOUS POEM COMPETITION** £250 prize to donate church funds. Poets can submit up to three poems each, 25 lines and 160 words max on any religious subject. The deadline is 31 Jan 2014 and the winner will be announced by March. See poster on board, visit [www.unitedpress.co.uk](http://www.unitedpress.co.uk) or e-mail [info@unitedpress.co.uk](mailto:info@unitedpress.co.uk)

### Catechism of the Catholic Church

*A complete summary of the Catholic Faith prepared following the Second Vatican Council*

#### Inspiration and Truth of Sacred Scripture

110 In order to discover the sacred authors' intention, the reader must take into account the conditions of their time and culture, the literary genres in use at that time, and the modes of feeling, speaking and narrating then current. "For the fact is that truth is differently presented and expressed in the various types of historical writing, in prophetic and poetical texts, and in other forms of literary expression."