

# St. Mary's Catholic Church

A parish of Ampleforth Abbey

25 Bond End, Knaresborough, HG5 9AW

Fr. William Wright O.S.B. [william@ampleforth.org.uk](mailto:william@ampleforth.org.uk)

01423 862388

E-mail: [parish@stmarysknaresborough.org.uk](mailto:parish@stmarysknaresborough.org.uk) Web: [www.stmarysknaresborough.org](http://www.stmarysknaresborough.org)

[www.facebook.com/stmarysknaresborough](http://www.facebook.com/stmarysknaresborough) [www.twitter.com/st\\_marys\\_parish](http://www.twitter.com/st_marys_parish)

## CELEBRATIONS AND MASS INTENTIONS FOR THE WEEK

PALM SUNDAY 2013/14

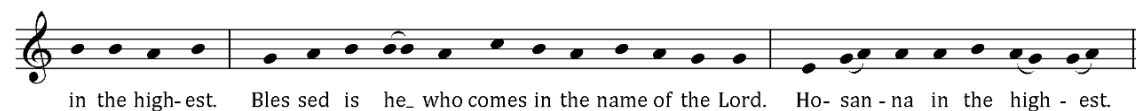
Sunday cycle A/weekday cycle II

Day	Rank	Mass times	Mass Intention
Sun 13 <sup>th</sup> April	PALM SUNDAY OF THE LORD'S PASSION	Vigil 6 pm	Eddie Churchill & Family
		10.00 am	The Reed Family
		5.00 pm	Parish
Mon 14 <sup>th</sup> April	Monday of Holy Week	9.00 am	Gabriel Harmer
Tue 15 <sup>th</sup> April	Tuesday of Holy Week	7.00 pm	Emma & John Westmancoat
Wed 16 <sup>th</sup> April	Wednesday of Holy Week	9.00 am	Mary Cameron

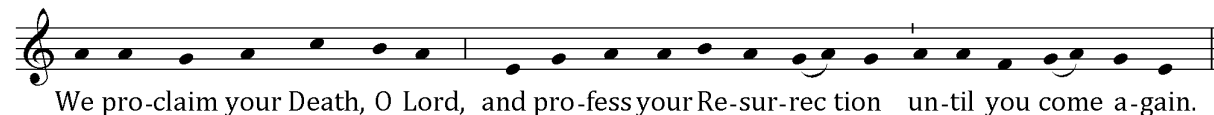
### SACRED TRIDUUM

Thu 17 <sup>th</sup> April	THURSDAY OF THE LORD'S SUPPER	7.30 pm	Baldock Family
Fri 18 <sup>th</sup> April	FRIDAY OF THE PASSION OF THE LORD	Liturgy 3.00 pm	
Sat 19 <sup>th</sup> April	HOLY SATURDAY		
Sun 20 <sup>th</sup> April	EASTER SUNDAY OF THE RESURRECTION OF THE LORD	Vigil 8.30 pm	Ken Hunter
		10.00 am	Parish
		5.00 pm	Chloe & Emma

**EUCCHARISTIC MINISTER PRAYER:** As we thank God for the gift of his Son to us in Holy Communion, let us remember those of our parish who are sick, old & housebound. May the Body and Blood of your Son, which we now send to them through our Eucharistic ministers, bring them hope, consolation & peace, through Christ our Lord.



### MEMORIAL ACCLAMATION (for use throughout Year A):



**SACRAMENT OF RECONCILIATION** (Confession) Saturday 10.30 am to 11.00 am, and by request at other times.

**PRAYER GROUP** Wednesday 7.25pm (Healing Prayer Group) Adoration, Lectio Divina, then prayers for inner or physical healing as required. For more information please contact Maureen 869264

**IN YOUR PRAYERS, PLEASE REMEMBER:** Joan Akroyd, Ellen Brown, Brian Buckley, Alma Corrie, Katie Deaton, David Doling, Jessica Ellerker, Pat Eve, Cecilia Finn, Ethna Fountain, Brian Greaves, Philip Hall, Eileen Hawkes, Barbara Hawksworth, Rosemary Hill, Sheila Madden, Eleanor Mayhew, Dot McEvoy, Mariana Robinson, Stephen Thorndike, Vitoria Windsor and all who are ill and those who care for them.

**PLEASE PRAY FOR** Sarah Dick, Richard Canterbury, Mary Josephine Smith, Ann O'Brien, Bernard Morrill, Rebekah Marfell, Austin Patrick McLoughlin, Frances Peakman, Ian Rose, Frank Garratt Anderson, Josie Sandland and all whose anniversary of death occurs at this time.

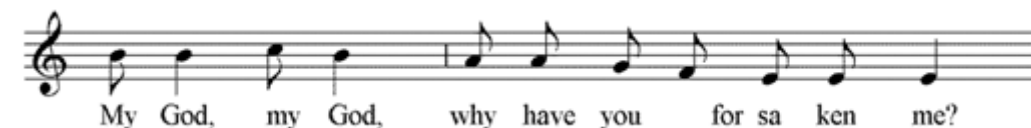
### THE HOLY FATHER'S MISSION INTENTIONS

That the Risen Lord may fill with hope the hearts of those who are being tested by pain and sickness.

## PALM SUNDAY OF THE LORD'S PASSION

### EVENTS AND NOTICES

**SUNDAY RESPONSORIAL PSALM** (Vigil 6.00 pm & 5.00pm) Repeat after cantor and after each verse



**ALTAR OF REPOSE** (Maundy Thursday). Please sign the sheet in the Atrium if you would like to choose a time to watch at the altar of repose.

**GOOD FRIDAY** There will be Stations of the Cross at 5.30 pm.

**HOLY WEEK COLLECTIONS** The traditional Maundy Thursday collection will be for The St Anthony Project (Claver Hall) providing support with rehabilitation and a home to those living with addictions. The collection on Good Friday will be for Holy Places.

**LEISURE CENTRE** W/c Mon 14<sup>th</sup> April it will be St Mary's volunteers' turn to serve refreshments at the Leisure Centre, Market Place. The Centre will be closed Good Friday, Saturday and Easter Monday. Brenda Johnson 863253.

**RIDING LIGHTS ROUGHSHOD THEATRE COMPANY** are performing a contemporary Passion play called Incredible at St Andrew's Church Hall Starbeck - Tues 15<sup>th</sup> April 7pm. Tickets £5 adults & £3 Concessions. Phone 01423 870821 or 07743 899279 or e mail [admin@andysonline.org](mailto:admin@andysonline.org) for tickets.

**CHILDREN'S EASTER CLUB 2014** CTIK are again running the Easter Club at Gracious Street Methodist Church Wed 16<sup>th</sup> to Fri 18<sup>th</sup> April (10 to 12.30pm). Contact June Graham 07759 619780 [junegraham@dsl.pipex.com](mailto:junegraham@dsl.pipex.com).

**MAUNDY THURSDAY LUNCH** Come along to a lunch of soup & roll with pudding & coffee, for just a small donation. Served at St Mark's Church, Leeds Road, Harrogate at 12.15pm on Maundy Thursday by the Scouts from the Harrogate District going to the World Scout Jamboree 2015 in Japan as part of the North Yorkshire and Cleveland Unit. If you need a lift call 01423 544528 or for more information please call Luke Broadhurst on 01423 797517

**STAR-GAZING AT THE VATICAN** This free lecture will take place at 6.30pm on Friday 25<sup>th</sup> April at Leeds Trinity University, LS18 5HD. It will be given by Guy Consolmagno SJ, a Jesuit brother and astronomer at the Vatican Observatory. More information from [chaplaincy@leedstrinity.ac.uk](mailto:chaplaincy@leedstrinity.ac.uk)

**SPRING FAIR** The fundraising team are planning a parish Spring Fair on **Saturday 10<sup>th</sup> May**. If you are having a spring clean and have any unwanted items, please save them. More details will follow shortly.

**CHURCHES TOGETHER & LE TOUR** A sponsored cycle ride is taking place on Sat 10<sup>th</sup> May in aid of Marie Curie Cancer Care, the official charity of Le Tour. Leaving the Market Cross at 12 noon & riding along the Beryl Burton Cycleway & back, stopping for ice cream at Ripley. CTIK hope to have 2 cyclists from each church. Please support if you can - contact Sheila Lund by 30<sup>th</sup> April for more details - 869487. Sponsor forms will be in the Atrium shortly.

**OUR LADY OF GUADALUPE RELIC** will visit Leeds Cathedral from 1- 6 June. See poster in the Atrium.

**TOUR DE WEST YORKSHIRE:** Vocations Service June 7<sup>th</sup>-11<sup>th</sup> sponsored cycle around the diocese, for 18-35s. Ilkley, Wetherby, Castleford, Hemsworth, Huddersfield, Haworth. Contact [vocations.office@leedsvocations.org.uk](mailto:vocations.office@leedsvocations.org.uk)

**TOUR DE FRANCE** Is there anything that the elderly or infirm would like provided to make their viewing and enjoyment of the TDF more pleasurable? Help with transport, refreshments, seating in the garden or hall, etc.?

**GIFT AID** The Gift Aid box sets for the new Tax Year commencing on 6<sup>th</sup> April 2014 are in the Atrium ready for collection. Would any parishioner who is a taxpayer and not in the Gift Aid scheme, but would like to join this, please contact Ian Burrell on 01423 550046. The scheme benefits St Mary's at no cost to the taxpaying parishioner.

**RAFFLE** for the TV, sound system & TV table - tickets £1 per strip. All proceeds to the Parish Hall refurbishment.

**GO SLOW** Please could we all drive really slowly and carefully on Church Lane for safety, and for consideration of the residents. Max speed 5 mph.

**PLEASE REMEMBER:** We do **NOT** have use of St John's car park on **Sunday mornings**. Please respect this.

**ADORATION:** Each weekday beginning 45 minutes before Mass **THE DIVINE OFFICE** is recited twenty minutes before each weekday Mass

**WEEKLY COLLECTIONS** w/c 6 April: plate £223.52; envelopes £243.40; votive £9.35; Building fund £164.85; Second Collection £381.30. CAFOD £401.53. Attendance 267.