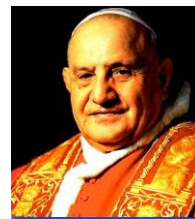


St. Mary's Catholic Church

A parish of Ampleforth Abbey

25 Bond End, Knaresborough, HG5 9AW
Fr. William Wright O.S.B. william@ampleforth.org.uk
01423 862388



E-mail: parish@stmarysknaresborough.org.uk Web: www.stmarysknaresborough.org
www.facebook.com/stmarysknaresborough www.twitter.com/st_marys_parish

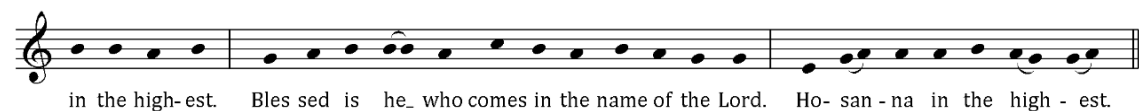
CELEBRATIONS AND MASS INTENTIONS FOR THE WEEK

3RD WEEK OF EASTER 2013/14

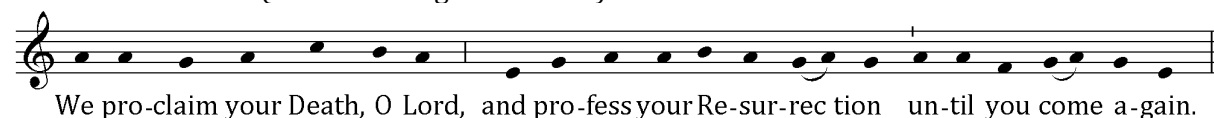
Sunday cycle A/weekday cycle II

Day	Rank	Mass times	Mass Intention
Sun 4 th May	THIRD SUNDAY OF EASTER	Vigil 6.00 pm	Margaret Anne Vokes
		10.00 am	Kathleen & Gerry Lynch
		5.00 pm	Parish
Mon 5 th May	Feria	9.00 am	
Tue 6 th May	Feria	7.00 pm	Private Intention
Wed 7 th May	Feria	9.00 am	Antony Obradovic
Thu 8 th May	Feria	No service	
Fri 9 th May	Feria	7.00 pm	Thanksgiving
Sat 10 th May	Feria	10.00 am	EBC
Sun 11 th May	FOURTH SUNDAY OF EASTER	Vigil 6.00 pm	
		9.00 am	Parish
		5.00 pm	Dorothea & George Veal

EUCCHARISTIC MINISTER PRAYER: As we thank God for the gift of his Son to us in Holy Communion, let us remember those of our parish who are sick, old & housebound. May the Body and Blood of your Son, which we now send to them through our Eucharistic ministers, bring them hope, consolation & peace, through Christ our Lord.



MEMORIAL ACCLAMATION (for use throughout Year A):



ADORATION: Each weekday beginning 45 minutes before Mass **THE DIVINE OFFICE** is recited twenty minutes before each weekday Mass

SACRAMENT OF RECONCILIATION (Confession) Saturday 10.30 am to 11.00 am, and by request at other times.

PRAYER GROUP Wednesday 7.25pm (Healing Prayer Group) Adoration, Lectio Divina, then prayers for inner or physical healing as required. For more information please contact Maureen 869264

IN YOUR PRAYERS, PLEASE REMEMBER: Joan Akroyd, Ellen Brown, Brian Buckley, Alma Corrie, Katie Deaton, David Doling, Jessica Ellerker, Pat Eve, Ethna Fountain, Brian Greaves, Philip Hall, Eileen Hawkes, Barbara Hawksworth, Rosemary Hill, Sheila Madden, Eleanor Mayhew, Dot McEvoy, June Robinson, Mariana Robinson, Stephen Thorndike, Vitoria Windsor and all who are ill and those who care for them.

PLEASE PRAY FOR Ralph Wharton, Ronald Moore, James Arthur Walker, Thomas Burke, Kathleen Wheldon, Elizabeth Howard, Maria Brizzolara, Mary Kathleen Minogue, Wilfrid Buck, Charlotte Whincup, Kathleen Stockburn and all whose anniversary of death occurs at this time.

THE HOLY FATHER'S MISSION INTENTIONS

Mary's Guidance: That Mary, Star of Evangelization, may guide the Church in proclaiming Christ to all nations.

AMPLEFORTH ABBEY TRUSTEES REG. CHARITY NO. 1026493

THIRD SUNDAY OF EASTER

EVENTS AND NOTICES

SUNDAY RESPONSORIAL PSALM (Vigil 6.00 pm & 5.00pm) Repeat after cantor and after each verse



SECOND COLLECTION: This week is for the Easter flowers, and next week will be for the Priests' Training Fund

OUR NEW HEADTEACHER Lee Talbot will be welcomed at commissioned at our 10am Mass this Sunday 4th May.

SPRING FAIR is on Saturday 10th May 11am - 3pm. Donations for Tombola, Nearly New, Jarbola, Bric-a-Brac, CDs, DVDs, Preserves, Chutney & Plants can all be left in the boxes in the Atrium - please see the yellow notices for details. All proceeds will go towards the Parish Hall refurbishment. Thank You.

CHURCHES TOGETHER & LE TOUR A sponsored cycle ride is taking place on Sat 10th May in aid of Marie Curie Cancer Care, the official charity of Le Tour. Leaving the Market Cross at 12 noon & riding along the Beryl Burton Cycleway & back, stopping for ice cream at Ripley. CTIK hope to have 2 cyclists from each church. Please support if you can - contact Sheila Lund by 30th April for more details - 869487. Sponsor forms will be in the Atrium shortly.

A DAY OF REFLECTION for Readers and Special Ministers of Holy Communion at Wheeler Hall, St Anne's Cathedral on Saturday 17th May. See the poster in the Atrium for more details.

QUIZ NIGHT on Saturday 17th May at 7.30 pm. Tickets are £7.00 to include hot supper. Tel: 865751 Julie Clark. Proceeds raised towards the upkeep of the Our Lady of the Crag Chapel.

WEST SIDE STORY: Youth event for 12-16 year olds. Polly James enjoyed herself so much when she visited over the summer that she has suggested a second event for the young people. We are going to see The Westside Story at Leeds Grand Theatre on the 24th May. Tickets are limited so please contact Charlotte Burrell at charlottesophieburrell@googlemail.com if you would like to come or would like further information.

DAY OF REFLECTION Filling our hearts and the hearts of our children with the vision of Francis: A Day of Reflection with Fr Daniel O'Leary at Leeds Trinity University LS18 5HG, Saturday 7th June 10am. £10 per person (bring sandwich). Book online at www.flm.org.uk or call Breda at 07734411282

TOUR DE WEST YORKSHIRE: Vocations Service June 7th-11th sponsored cycle around the diocese, for 18-35s. Ilkley, Wetherby, Castleford, Hemsworth, Huddersfield, Haworth. Contact vocations.office@leeds vocations.org.uk

SUNDAY 6TH JULY, Tour de France comes through Knaresborough and down Bond End. Movement in town will be restricted or difficult from early morning till late afternoon. 10am Mass will be impractical. PPC has approved the proposal to drop the 10am Mass that day and to celebrate an additional Mass at 6am. It may be possible to adjust that time slightly but Tour de France activity will be starting early that morning. The time for this additional mass will be confirmed and advertised nearer the time.

LEEDS DIOCESAN PILGRIMAGE TO LOURDES is from the 11th-17th July flying direct from Leeds Bradford airport. There is an ever increasing need for more Doctors, carers and especially Nurses to come with the pilgrimage so we can provide the care required. If you are interested in coming to help or to provide a donation to the Lourdes Diocesan fund please contact the President of Hospitality Jo Jarvis on 07881 518465.

MISSIONARY SERVANTS OF THE POOR TW SUMMERCAMP FOR BOYS. Held at the Seminary in Ajofrín, (Toledo, Spain) from 2nd - 25th August 2014. The actual camp is free, so all that is required of the boys who wish to come is that they pay for their own travel to and from the Seminary. More information from the notice in the Atrium.

GO SLOW Please could we all drive really slowly and carefully on Church Lane for safety, and for consideration of the residents. Max speed 5 mph.

WEEKLY COLLECTIONS w/c 27th April: plate £242.50; envelopes £293.50; votive £11.20; building fund £10.00; Average weekly standing orders £505. Attendance 233.

MASS INTENTIONS: If you wish a Mass to be celebrated for a particular intention, please use the orange envelopes available in the Atrium. Please put them through the letter box, on the collection plate, or give them to Fr William.

PLEASE REMEMBER: We do **NOT** have use of St John's car park on **Sunday mornings**. Please respect this.

CHURCH SHOP OPENING TIMES after 6pm Mass on Saturday, after 10am and 5pm Masses on Sunday and on request. Cards, gifts and children's books are currently available. The shop also sells a range of religious and Fair Trade items. **Mass Books** for different age groups (new translation) now in the shop at £3.99 and £3.95.