

# St. Mary's Catholic Church

A parish of Ampleforth Abbey

25 Bond End, Knaresborough, HG5 9AW

Fr. William Wright O.S.B. [william@ampleforth.org.uk](mailto:william@ampleforth.org.uk)

01423 862388

**E-mail:** [parish@stmarysknaresborough.org.uk](mailto:parish@stmarysknaresborough.org.uk) **Web:** [www.stmarysknaresborough.org](http://www.stmarysknaresborough.org)

[www.facebook.com/stmarysknaresborough](https://www.facebook.com/stmarysknaresborough) [www.twitter.com/st\\_marys\\_parish](https://www.twitter.com/st_marys_parish)

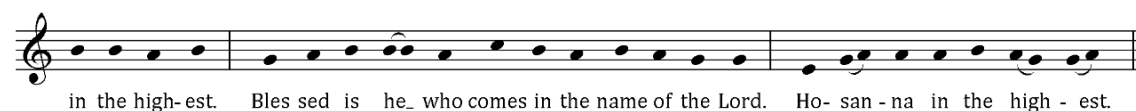
## CELEBRATIONS AND MASS INTENTIONS FOR THE WEEK

5<sup>TH</sup> WEEK OF EASTER 2013/14

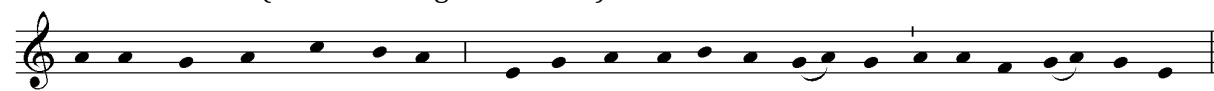
Sunday cycle A/weekday cycle II

Day	Rank	Mass times	Mass Intention
Sun 18 <sup>th</sup> May	<b>FIFTH SUNDAY OF EASTER</b>	Vigil 6.00 pm	<b>Anne Maguire</b>
		10.00 am	<b>Parish</b>
		5.00 pm	<b>Josie Bleakley</b>
Mon 19 <sup>th</sup> May	<b>Feria</b>	9.00 am	
Tue 20 <sup>th</sup> May	<b>Feria</b>	7.00 pm	<b>Jonathan Van Smit</b>
Wed 21 <sup>st</sup> May	<b>Feria</b>	9.00 am	<b>June Robinson</b>
Thu 22 <sup>nd</sup> May	<b>Feria</b>	<b>No service</b>	
Fri 23 <sup>rd</sup> May	<b>Feria</b>	7.00 pm	<b>June and George Robinson</b>
Sat 24 <sup>th</sup> May	<b>Feria</b>	10.00 am	<b>Fr Abbot</b>
Sun 25 <sup>th</sup> May	<b>SIXTH SUNDAY OF EASTER</b>	Vigil 6.00 pm	<b>Dead and survivors of Dien Bien Phu</b>
		10.00 am	<b>Parish</b>
		5.00 pm	<b>Gladys Dorothea Veal</b>

**EUCCHARISTIC MINISTER PRAYER:** As we thank God for the gift of his Son to us in Holy Communion, let us remember those of our parish who are sick, old & housebound. May the Body and Blood of your Son, which we now send to them through our Eucharistic ministers, bring them hope, consolation & peace, through Christ our Lord.



**MEMORIAL ACCLAMATION** (for use throughout Year A):



We pro-claim your Death, O Lord, and pro-fess your Re-sur-rec tion un-til you come a-gain.

**ADORATION:** Each weekday beginning 45 minutes before Mass **THE DIVINE OFFICE** is recited twenty minutes before each weekday Mass

**SACRAMENT OF RECONCILIATION** (Confession) Saturday 10.30 am to 11.00 am, and by request at other times.

**PRAYER GROUP** Wednesday 7.25pm (Healing Prayer Group) Adoration, Lectio Divina, then prayers for inner or physical healing as required. For more information please contact Maureen 869264

**IN YOUR PRAYERS, PLEASE REMEMBER:** Joan Akroyd, Ellen & Gerry Brown, Brian Buckley, Alma Corrie, Katie Deaton, David Doling, Jessica Ellerker, Pat Eve, Brian Greaves, Philip Hall, Eileen Hawkes, Barbara Hawsworth, Rosemary Hill, Sheila Madden, Eleanor Mayhew, Dot McEvoy, Mariana Robinson, Stephen Thorndike, Vitoria Windsor and all who are ill and those who care for them.

**PLEASE PRAY FOR** Margaret Bridger, who died on 14<sup>th</sup> May, Olive Marshall, John Michael Harper, Patrick Ballantyne, Michael Joseph Naughton and all whose anniversary of death occurs at this time.

### THE HOLY FATHER'S MISSION INTENTIONS

Mary's Guidance: That Mary, Star of Evangelization, may guide the Church in proclaiming Christ to all nations.

AMPLEFORTH ABBEY TRUSTEES REG. CHARITY NO. 1026493

## FIFTH SUNDAY OF EASTER

### EVENTS AND NOTICES

**SUNDAY RESPONSORIAL PSALM** (Vigil 6.00 pm & 5.00pm) Repeat after cantor and after each verse



**SPRING FAIR** Thank you to everyone who supported the Spring Fair by way of donations, by baking or by their attendance on the day. Despite the weather it was very successful and raised £1200 for the building fund. A huge thank you also to the volunteers who helped set up and run the stalls. Your help was very much appreciated.

**CHURCH GARDEN** At this time of the year everything is growing frantically (weeds included) and the garden volunteers are appealing to anyone in the parish who can help with light weeding and hoeing. We are holding some events in the garden (bed race cafe, BBQ etc) and we want the garden looking its best. Also if anyone can spare some time with a strimmer to tidy up the corner previously hidden behind the large conifer that would also be appreciated. If you can help in any way please contact Sheila Lund 07885 568856 or Angela Wicken 07800 887392.

**GENERATION JIVE!** From 2-4 pm on Thursday 19<sup>th</sup> June, St John Fisher Catholic High School is holding a community tea dance to celebrate the life of St John Fisher. All are very welcome. Contact Fran Taylor on 01423 887254 or email [ftaylor@sjfchs.org.uk](mailto:ftaylor@sjfchs.org.uk)

**BED RACE CAFÉ** on Saturday 14 June. This has become a successful annual event and the fundraising team are looking for volunteers to help set up the garden, bake and help in the café. Please see the list in the atrium.

**ETHNA FOUNTAIN'S** funeral will be at St Mary's on Tuesday 20<sup>th</sup> May at 11.00am.

**JUNE ROBINSON'S** funeral will be at St Mary's on Wednesday 21<sup>st</sup> May at 11.00am.

**MARGARET BRIDGER'S** funeral will be at St Oswald's Farnham on Friday 23<sup>rd</sup> May at 4.30pm

**FILLING OUR HEARTS AND THE HEARTS OF OUR CHILDREN** with the vision of Francis: A Day of Reflection on Family, Faith, Francis with Fr Daniel O'Leary. At Leeds Trinity University LS18 5HD on Saturday 7<sup>th</sup> June from 10am -3.30pm. £10 per person (bring sandwich) Book online at [www.flm.org.uk](http://www.flm.org.uk) or call Breda at 07734411282

**CLAVER HALL.** The Trustees send their sincerest thanks for our Maundy Thursday donation of £143.31 in support of Claver Hall. Please keep the residents and staff of Claver in your prayers. A copy of the last Annual Report is available in the atrium. This includes life stories from current and previous residents.

**WEST SIDE STORY:** Youth event for 12-16 year olds. Polly James enjoyed herself so much when she visited over the summer that she has suggested a second event for the young people. We are going to see The Westside Story at Leeds Grand Theatre on the 24<sup>th</sup> May. Tickets are limited so please contact Charlotte Burrell at [charlottesophieburrell@googlemail.com](mailto:charlottesophieburrell@googlemail.com) if you would like to come or would like further information.

**DEMENTIA AWARENESS WEEK** A new play "Don't Leave Me Now" by Brian Daniels on Thursday 22 May 2014 2.00pm and 7.00pm at the Frazer Theatre Knaresborough. Email [info@dementiaforward.org.uk](mailto:info@dementiaforward.org.uk) or Tel 01765 645 904. Admission: £5 per person on the door as a donation to the charity

**TOUR DE WEST YORKSHIRE 7-11TH JUNE:** Do you want to spend a day or more cycling around the diocese to pray for vocations and for our young people? If so, and you are over 18, contact Mgr Paul Grogan, Vocations Director, [vocations.office@leedsvocations.org.uk](mailto:vocations.office@leedsvocations.org.uk)

**SUNDAY 6<sup>TH</sup> JULY,** Tour de France comes through Knaresborough and down Bond End. Movement in town will be restricted or difficult from early morning till late afternoon. 10am Mass will be impractical. PPC has approved the proposal to drop the 10am Mass that day and to celebrate an additional Mass at 6am. It may be possible to adjust that time slightly but Tour de France activity will be starting early that morning. The time for this additional mass will be confirmed and advertised nearer the time.

**WEEKLY COLLECTIONS** w/c 11<sup>th</sup> May: plate £215.06; envelopes £222.00; votive £17.54; building fund £51.00; Second Collection £312.86; Average weekly standing orders £505. Attendance 209.

**LEISURE CENTRE, MARKET PLACE.** It is St Mary's turn to serve refreshments week commencing Monday 26<sup>th</sup> May. However, the Centre will be closed on Monday 26<sup>th</sup> May for the bank holiday.

**THE POPE FRANCIS RETREAT** June 13-15, Hyning Monastery, Warton, Carnforth. See notice in atrium or contact Fr Stephen Wright 01772 455955 [stephenosb@btinternet.com](mailto:stephenosb@btinternet.com) £95 including Retreat fee.

**PLEASE REMEMBER:** We do **NOT** have use of St John's car park on **Sunday mornings**. Please respect this.