

# St. Mary's Catholic Church

A parish of Ampleforth Abbey

25 Bond End, Knaresborough, HG5 9AW

Fr. William Wright O.S.B. [william@ampleforth.org.uk](mailto:william@ampleforth.org.uk)

01423 862388

E-mail: [parish@stmarysknaresborough.org.uk](mailto:parish@stmarysknaresborough.org.uk) Web: [www.stmarysknaresborough.org](http://www.stmarysknaresborough.org)

[www.facebook.com/stmarysknaresborough](https://www.facebook.com/stmarysknaresborough) [www.twitter.com/st\\_marys\\_parish](https://www.twitter.com/st_marys_parish)

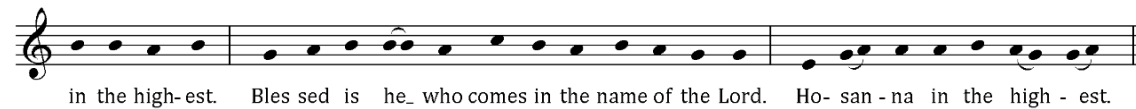
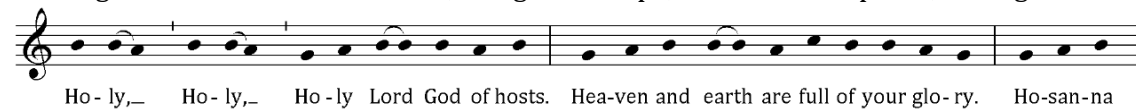
## CELEBRATIONS AND MASS INTENTIONS FOR THE WEEK

25<sup>TH</sup> WEEK IN ORDINARY TIME 2013/14

Sunday cycle A/weekday cycle II

Day	Rank	Mass times	Mass Intention
Sun 21 <sup>st</sup> Sep	<b>TWENTY FIFTH SUNDAY IN ORDINARY TIME</b>	Vigil 6.00 pm	<b>James Patrick Morley</b>
		10.00 am	<b>Ruth Pickles</b>
		5.00 pm	<b>Parish</b>
Mon 22 <sup>nd</sup> Sep	<b>Feria</b>	9.00 am	<b>A Safe Delivery</b>
Tue 23 <sup>rd</sup> Sep	<b>Memorial: St Pius of Pietrelcina</b>	<b>9.00 am</b>	<b>Gerry Brown</b>
Wed 24 <sup>th</sup> Sep	<b>Memorial: Our Lady of Walsingham</b>	9.00 am	<b>Robinson Family</b>
Thu 25 <sup>th</sup> Sep	<b>Feria</b>	<b>No service</b>	
Fri 26 <sup>th</sup> Sep	<b>Feria</b>	7.00 pm	<b>Anniversary</b>
Sat 27 <sup>th</sup> Sep	<b>Memorial: St Vincent de Paul</b>	10.00 am	
Sun 28 <sup>th</sup> Sep	<b>TWENTY SIXTH SUNDAY IN ORDINARY TIME</b>	Vigil 6.00 pm	<b>John B</b>
		10.00 am	<b>Walter William Morley</b>
		5.00 pm	<b>Parish</b>

**EUCCHARISTIC MINISTER PRAYER:** As we thank God for the gift of his Son to us in Holy Communion, let us remember those of our parish who are sick, old & housebound. May the Body and Blood of your Son, which we now send to them through our Eucharistic ministers, bring them hope, consolation & peace, through Christ our Lord.



**MEMORIAL ACCLAMATION** (for use throughout Year A):



**ADORATION:** Each weekday beginning 45 minutes before Mass **THE DIVINE OFFICE** is recited twenty minutes before each weekday Mass

**ST JOSEPH'S TABLE:** Collection of food for the homeless the first weekend of every month

**SACRAMENT OF RECONCILIATION** (Confession) Saturday 10.30 am to 11.00 am, and by request at other times.

**PRAYER GROUP** Wednesday 7.25pm (Healing Prayer Group) Adoration, Lectio Divina, then prayers for inner or physical healing as required. For more information please contact Maureen 869264

**IN YOUR PRAYERS, PLEASE REMEMBER:** Joan Akroyd, May Braythwaite, Ellen Brown, Brian Buckley, Alma Corrie, Katie Deaton, David Doling, Jessica Ellerker, Pat Eve, Brian Greaves, Philip Hall, Eileen Hawkes, Barbara Hawksworth, Rosemary Hill, Simon Kennett, Eleanor Mayhew, Dot McEvoy, Mariana Robinson, Stephen Thorndike, Vitoria Windsor and all who are ill and those who care for them.

**PLEASE PRAY FOR:** Patricia Richmond, Herbert Day, Michael Paterson, Catherine Hattersley, Vera Greenwood, Ann Whitaker, Louise Sarah Burnett, Mary Brown, Francis Kehoe, Hugh Ignatius Dessain and all whose anniversary of death occurs at this time.

### THE HOLY FATHER'S MISSION INTENTIONS

That Christians, inspired by the Word of God, may serve the poor and suffering.

AMPLEFORTH ABBEY TRUSTEES REG. CHARITY NO. 1026493

## TWENTY FIFTH SUNDAY IN ORDINARY TIME

### EVENTS AND NOTICES



The Lord is close to those who call him

**NOTE THE CHANGED TIME** for Mass which will be at 9am instead of 7pm on Tuesday 23<sup>rd</sup> September.

**WELCOMERS ROTA** new rota on the letter board.

**LEISURE CENTRE** Week commencing Monday 29 October, will be St. Mary's turn to serve refreshments.

**THE HOLY LAND** Enjoy sharing the experiences of a group of parishioners who joined a pilgrimage to the Holy Land organised by St Aelred's earlier this year. There will be a lively powerpoint presentation and an opportunity to see, and purchase, items hand carved in Bethlehem. Please support, 7.30 pm Tuesday 30 September

**SCHOOL VOLUNTEERS** Do you have an hour or two to spare each week? Perhaps you might think about joining us at St Mary's Catholic Primary School as a volunteer. If you would like to find out more please contact Mr Lee Talbot, Headteacher, on 01423 864631.

**CHARITY MARKET STALL** Thank you to all who helped make our day at Knaresborough Market such a success; the bakers and jam makers and all who helped on the day. It was thoroughly enjoyable, we raised £409.31 towards the Parish Hall refurbishment and it didn't even rain!

Next event: Music, Music, Music on Friday 17<sup>th</sup> October – watch out for the poster!

**CHURCH HALL REFURBISHMENT** (Phase 1) - The new kitchen has been installed and the redecoration of the library is now complete. Thank you to all who were involved in the project and to all parishioners who have supported our fundraising activities. Details of the next planned phases are available on the Parish Website at: <http://www.stmarysknaresborough.org> and are also on display of the walls in the Link Corridor between the Hall and the Church. All are invited to have a look and to make any comments, queries or suggestions to Fr William, or Steven Perry (Hall Manager) 862913 or [stevenhperry@ntlworld.com](mailto:stevenhperry@ntlworld.com)

**ST JOHN FISHER SCHOOL** are asking parishioners to consider offering hospitality to some mission volunteers between Sat 18th and Fri 24th Oct. Some only need a bed for one night or two and all food can be provided by the school. If able to help or for further information, contact Julie Boothman: 01423 500311 [jboothman@sifchs.org.uk](mailto:jboothman@sifchs.org.uk)

**SAFEGUARDING** the Protection of Children and Vulnerable Adults. If you have any concerns or questions relating to Safeguarding please contact your Parish Safeguarding representative Mrs Joanne Brennan on 0781 292 607 or 01423 331900 or Father William Wright on 01423 862388 If you wish to contact the Diocese (to whom Safeguarding issues are referred) please contact The Diocesan Protection Co-ordinator Ms Suzanne Mitchell 0113 261 8059 or 0113 261 8046 In an emergency please contact the Police.

**COURSE FOR NON-CATHOLICS** This is the course run each year for non-catholics preparing to become catholics or simply wanting to learn more about the Catholic Faith; beginning in the Autumn and running through to Easter 2015. Please contact Fr William ([william@ampleforth.org.uk](mailto:william@ampleforth.org.uk)) if you would like to join the course this year or to just find to more (three participants so far, with their sponsors)

**AFTER MASS** please remember to take out what you brought in. Let's keep the Church and Atrium clean and tidy. Hymn books should be placed upright on the shelves in the bookcase.

**MASS INTENTIONS:** If you wish a Mass to be celebrated for a particular intention, please use the orange envelopes available in the Atrium. Please put them through the letter box, on the collection plate, or give them to Fr William.

**CHURCH GARDEN** volunteers are appealing to anyone in the parish who can help with light weeding and hoeing. If you can help in any way please contact Sheila Lund 07885 568856 or Angela Wicken 07800 887392.

**CHURCH SHOP OPENING TIMES** after 6pm Mass on Saturday, after 10am and 5pm Masses on Sunday and on request. Cards, gifts and children's books are currently available. The shop also sells a range of religious and Fair Trade items. **Mass Books** for different age groups (new translation) now in the shop at £3.99 and £3.95.

**A REMINDER!** Cheques should be made payable to Ampleforth Abbey Trustees, **NOT** to St Mary's Church.

**PLEASE REMEMBER:** We do **NOT** have use of St John's car park on **Sunday mornings**. Please respect this.

**WEEKLY COLLECTIONS** w/b 14<sup>th</sup> Sep plate £179.16; envelopes £245.82; Votive £8.30; Building Fund £9.00; Standing Orders weekly average £505. Second Collection £120.35. Attendance 186