



St. Mary's Catholic Church

A parish of Ampleforth Abbey
 25 Bond End, Knaresborough, HG5 9AW
 Fr. William Wright O.S.B. william@ampleforth.org.uk
 01423 862388
 E-mail: parish@stmarysknaresborough.org.uk
 Web: www.stmarysknaresborough.org
www.facebook.com/stmarysknaresborough
www.twitter.com/st_marys_parish



THIRD SUNDAY OF ADVENT

EVENTS AND NOTICES



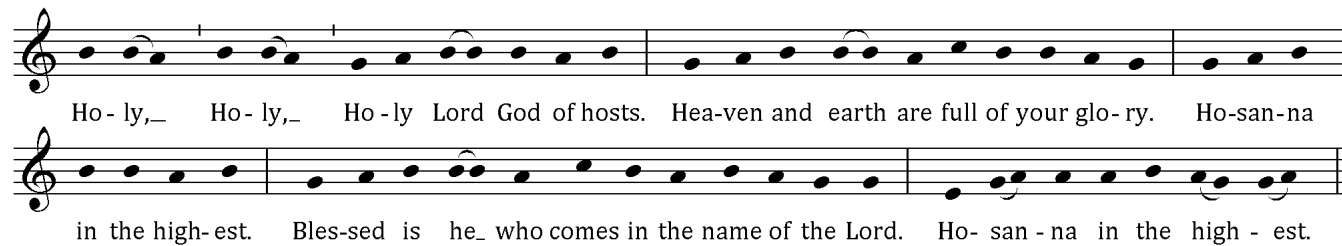
CELEBRATIONS AND MASS INTENTIONS FOR THE WEEK

3RD WEEK OF ADVENT 2014

Sunday cycle B/weekday cycle I

Day	Rank	Mass times	Mass Intention
Sun 14 th Dec	THIRD SUNDAY OF ADVENT	Vigil 6.00 pm	Ruth Pickles
		10.00 am	Jean Smith
		5.00 pm	Parish
Mon 15 th Dec	Feria	9.00 am	Special Intention
Tue 16 th Dec	Feria	7.00 pm	
Wed 17 th Dec	Feria	9.00 am	
Thu 18 th Dec	Feria	10.30 am in School*	
Fri 19 th Dec	Feria	7.00 pm	
Sat 20 th Dec	Feria	10.00 am	
Sun 21 st Dec	FOURTH SUNDAY OF ADVENT	Vigil 6.00 pm	Parish
		10.00 am	Special Intention
		5.00 pm	Peace in the Holy Land

EUCCHARISTIC MINISTER PRAYER: As we thank God for the gift of his Son to us in Holy Communion, let us remember those of our parish who are sick, old & housebound. May the Body and Blood of your Son, which we now send to them through our Eucharistic ministers, bring them hope, consolation & peace, through Christ our Lord.



MEMORIAL ACCLAMATION (for use throughout Year B):

When we eat this Bread and drink this Cup, we proclaim your Death, O Lord, until you come again.

ADORATION: Each weekday beginning 45 minutes before Mass **THE DIVINE OFFICE** is recited twenty minutes before each weekday Mass

SACRAMENT OF RECONCILIATION (Confession) Saturday 10.30 am to 11.00 am, and by request at other times.

PRAYER GROUP Wednesday 7.25pm (Healing Prayer Group) Adoration, Lectio Divina, then prayers for inner or physical healing as required. For more information please contact Maureen 869264

IN YOUR PRAYERS, PLEASE REMEMBER: Joan Akroyd, May Braythwaite, Ellen Brown, Brian Buckley, Alma Corrie, Katie Deaton, David Doling, Jessica Ellerker, Pat Eve, Brian Greaves, Philip Hall, Eileen Hawkes, Barbara Hawksworth, Rosemary Hill, Simon Kennett, Eleanor Mayhew, Dot McEvoy, Peter Owens, Mariana Robinson, Stephen Thorndike, Vitoria Windsor and all who are ill and those who care for them.

PLEASE PRAY FOR: Rose Emmett, recently deceased, Stephen Keane, Harry Rowbotham, Bryan Wilford, Edmond Bergin, Cyril Madden, Fr, Gabriel McNally, William Francis Doyle, Isabella Thompson, Edith Kenyon, Betty Dodds, Annie Tierney, Lily O'Brien and all whose anniversary of death occurs at this time.

THE HOLY FATHER'S MISSION INTENTIONS

That the birth of the Redeemer may bring peace and hope to all people of good will.

CONFESSIONS Full day of confessions from 10am-6pm on the Saturday 20th December at St Robert's Harrogate.

KNARESBOROUGH FOODBANK: Please help us make a parish contribution in the run up to Christmas. There will be a large box out Sunday 14th December to receive any food items you may want to donate. These will then be delivered to Trinity Church in time for Christmas.

SVP MEETING . Update and planning for next year Monday 15/12 at 7pm .Mulled wine and mince pies at St Mary's Further information from Siobhan 07714235911 or e mail siobhan.goodfield@gmail.com

SENIOR CITIZEN AND COMMUNITY CHRISTMAS PARTY Year 8 pupils at St. John Fisher Catholic High School, Harrogate warmly invite you the annual Senior Citizen and Community Christmas Party! Come and join us for food, drink, entertainment and festive cheer on Tuesday 16th December from 2-4pm. Christmas tea and mince pies, musical entertainment, carols and the warmest of welcomes will be provided by the young people. All are very welcome. If you would like to join us or know of anyone who would welcome an invite, please contact Fran Taylor at the school on 01423 887254 or email: ftaylor@sjfchs.org.uk

***THURSDAY** 18 December Mass in school at 10.30 all welcome.

CHRISTMAS HAMPER RAFFLE Tickets are now on sale to win a luxury hamper just in time for Christmas. £1 per ticket. Draw to take place Sunday 21st December. Please support. All proceeds will support the Parish Hall refurbishment. Thank You.

LEISURE CENTRE: It is St Mary's turn to serve refreshments at the Leisure Centre, in the Market Place on Monday 22 December and Tuesday 23 December. The Centre will be closed from 24 – 27 December for Christmas.

KNARESBOROUGH FOOD BANK: A Food Bank is up and running in Knaresborough. We would like to make a parish contribution in the run up to Christmas. If you are out doing your Christmas shopping, please spare a thought for other families who are living in very difficult circumstances & consider buying an extra item if at all possible. There will be a large box out in the Atrium to deposit your gifts. Long life milk, tinned meat & fruit, squash & hygiene products especially welcome, & also at this time of year Christmas puddings, mince pies & crackers. Please help if you can. Thank You.

ST MARY'S PRIMARY SCHOOL ADMISSIONS: Applications for September 2015 are open until January 2015, further visits from parents looking to apply for a primary place are more than welcome to come and look around the school. If you know of a parent who is looking for a school place for their child, please let them know about us!

HAND-CARVED OLIVE WOOD FROM BETHLEHEM AND THE HOLY LAND now available in the shop. Each piece carved individually. Prices start from 80p.

GROUP CLEANING Your help would be greatly appreciated to keep the church clean. Can you spare 1hr every 8-12 weeks? Please telephone Shirley Knowles on 07867 784 663

ADVENT REFLECTIONS: To receive daily reflections through Advent 2014 from Fr Robert Barron sign up free on <http://AdventReflections.com>

WOMEN'S WORLD DAY OF PRAYER A service is held each year in March, written this year by the Christian women of the Bahamas. The committee in Knaresborough has members from all the Churches except St Mary's and seeks a representative to attend two meetings prior to the service &, hopefully help involve other members to take part. Further information can be obtained by contacting Mary Lumb on 01423 863281.

AFTER MASS please remember to take out what you brought in. Let's keep the Church and Atrium clean and tidy. Hymn books should be placed upright on the shelves in the bookcase.

SNOW SHOVELLING Would anybody be willing to be on call to help with snow shovelling the church car park? Please contact Fr William: william@ampleforth.org.uk

WEEKLY COLLECTIONS w/b 7th Dec: plate £187.78; envelopes £220.50; Votive £14.55; Building Fund £5.00; Standing Orders weekly average £505. Attendance: 243.