

# St. Mary's Catholic Church

A parish of Ampleforth Abbey

25 Bond End, Knaresborough, HG5 9AW

Fr. William Wright O.S.B. [william@ampleforth.org.uk](mailto:william@ampleforth.org.uk)

01423 862388

E-mail: [parish@stmarysknaresborough.org.uk](mailto:parish@stmarysknaresborough.org.uk) Web: [www.stmarysknaresborough.org](http://www.stmarysknaresborough.org)

[www.facebook.com/stmarysknaresborough](http://www.facebook.com/stmarysknaresborough) [www.twitter.com/st\\_marys\\_parish](http://www.twitter.com/st_marys_parish)

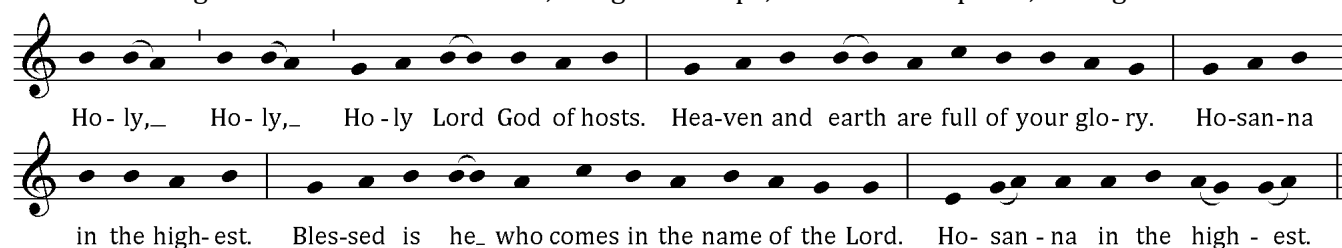
## CELEBRATIONS AND MASS INTENTIONS FOR THE WEEK

2<sup>ND</sup> WEEK IN ORDINARY TIME 2014/15

Sunday cycle B/weekday cycle I

Day	Rank	Mass times	Mass Intention
Sun 18 <sup>th</sup> Jan	<b>SECOND SUNDAY IN ORDINARY TIME</b>	Vigil 6.00 pm	<b>Parish</b>
		10.00 am	<b>Michael James Gilchrist</b>
		5.00 pm	<b>Peace in Holy Land</b>
Mon 19 <sup>th</sup> Jan	<b>Feria</b>	9.00 am	<b>Bernard Nolan</b>
Tue 20 <sup>th</sup> Jan	<b>Feria</b>	7.00 pm	<b>Mary &amp; Herbert Bell</b>
Wed 21 <sup>st</sup> Jan	<b>Memoria: St Agnes, Virgin &amp; Martyr</b>	9.00 am	<b>Constance &amp; James Agar</b>
Thu 22 <sup>nd</sup> Jan	<b>Feria</b>	No service	
Fri 23 <sup>rd</sup> Jan	<b>Feria</b>	7.00 pm	<b>Frank Carr</b>
Sat 24 <sup>th</sup> Jan	<b>Memoria: St Francis de Sales</b>	10.00 am	<b>Dom. Bede Maitland</b>
Sun 25 <sup>th</sup> Jan	<b>THIRD SUNDAY IN ORDINARY TIME</b>	Vigil 6.00 pm	<b>John Mulcahy</b>
		10.00 am	<b>Wedding Anniversary</b>
		5.00 pm	<b>Parish</b>

**EUCCHARISTIC MINISTER PRAYER:** As we thank God for the gift of his Son to us in Holy Communion, let us remember those of our parish who are sick, old & housebound. May the Body and Blood of your Son, which we now send to them through our Eucharistic ministers, bring them hope, consolation & peace, through Christ our Lord.



**MEMORIAL ACCLAMATION** (for use throughout Year B):

**When we eat this Bread and drink this Cup, we proclaim your Death, O Lord, until you come again.**

**ADORATION:** Each weekday beginning 45 minutes before Mass **THE DIVINE OFFICE** is recited twenty minutes before each weekday Mass

**SACRAMENT OF RECONCILIATION** (Confession) Saturday 10.30 am to 11.00 am, and by request at other times.

**PRAYER GROUP** Wednesday 7.25pm (Healing Prayer Group) Adoration, Lectio Divina, then prayers for inner or physical healing as required. For more information please contact Maureen 869264

**IN YOUR PRAYERS, PLEASE REMEMBER:** Joan Akroyd, May Braythwaite, Ellen Brown, Brian Buckley, Alma Corrie, Katie Deaton, David Doling, Jessica Ellerker, Pat Eve, Brian Greaves, Philip Hall, Eileen Hawkes, Barbara Hawksworth, Rosemary Hill, Eileen Huck, Simon Kennett, Emily March, Eleanor Mayhew, Dot McEvoy, Peter Owens, Mariana Robinson, Stephen Thorndike, Vitoria Windsor and all who are ill and those who care for them.

**PLEASE PRAY FOR:** Margo Sanderson who died recently, Betty Wood, Giovanni Brizzolara, Peter George Peel, Josephine Elizabeth Teggin, Clara Dunne, Colin Chester, Ernest Ralph Larvin, Annie Emmett, Fr Denis Marshall, Peter Cornelius Dodds, Gladys Raddell and all whose anniversary of death occurs at this time.

### THE HOLY FATHER'S MISSION INTENTIONS

That in this year dedicated to consecrated life, religious men and women may rediscover the joy of following Christ and strive to serve the poor with zeal.

## SECOND WEEK IN ORDINARY TIME

### EVENTS AND NOTICES



**NEXT SUNDAY 25<sup>TH</sup> JANUARY SECOND COLLECTION** for the Catholic Education Service

**SACRAMENT OF CONFIRMATION** Preparation course begins Sunday 15<sup>th</sup> February at 6.00pm This is open to anyone in Year 8 or above wishing to prepare for the Sacrament of Confirmation this Year. Date of Confirmation yet to be fixed, but it's usually around Pentecost which is 24<sup>th</sup> May this year. Those wishing to enrol, please apply by email: [william@ampleforth.org.uk](mailto:william@ampleforth.org.uk)

**THE FUNDRAISING TEAM** was set up just over a year ago to drive forward the need to raise funds for the refurbishment of the Parish Hall. We have just reached a fantastic milestone, and have raised £10,000! We couldn't have done this without the wonderful support of our parish, so a huge heartfelt THANK YOU to one & all.

**PARISH PASTORAL COUNCIL** PPC elections take place Sunday 1<sup>st</sup> February 2015 to elect a representative for the Activities ministries and a representative to the Support ministries. See Atrium notice board for details and a draft list of candidates. Please notify Fr William of any updates/amendments to the draft list before Friday 23<sup>rd</sup> January so that a final list of candidates can be published Sunday 25<sup>th</sup> January.

**QUIZ NIGHT** on Saturday 31<sup>st</sup> January at 7pm. Tickets £7 including hot supper from Julie Clark tel: 865751 Proceeds for the Chapel of Our Lady of the Crag.'

**TABLE TOP SALE** Saturday 28<sup>th</sup> February 11am- 2pm - proceeds for the Hall Refurbishment. An opportunity to sell any unwanted items - good quality bric a brac, books, toys & games, nearly new clothes (no food or drink sales). To book a table £10 (tables provided) please contact Angela Wicken 07800 887392 or Sheila Lund 07885 568856. Alternatively please donate unwanted items. Items can be brought to church from 8<sup>th</sup> February or we will collect.

**PRE-CONFIRMATION MEETING** St John Fisher School are offering a pre-confirmation evening on Tuesday 27<sup>th</sup> January at 7pm. This is for parents and young people to encourage them to take part in their parish preparation programmes. The evening will finish by 8.15pm.

**JUSTICE & PEACE COMMISSION SURVEY ON FOOD POVERTY IN THE LEEDS DIOCESE** The J&P Commission want to find out how many individual parishioners in the Leeds diocese have been involved in any way in providing food for hungry people in the local area. This might have been through giving food to a food bank, the SVP or other organisation, helping provide meals to local hungry people or giving money regularly to support these types of activity Please complete their survey if you have done ANY of these things. Simply go online to the address [www.leedsjp.org.uk](http://www.leedsjp.org.uk) and click on the 'Do the Survey' button; it will only take two minutes to complete.

**IN BENEDICT'S FOOTSTEPS** Pilgrimage Retreat 11-18<sup>th</sup> October Rome, Subiaco Monte Cassino. Details on the atrium noticeboard, early application advised.

**PRAYER SPONSORS NEEDED.** We have 30 children from our parish starting Holy Communion preparation. We need members of the parish to offer to pray for them. You will be given their name and they will be given yours. You will be simply asked to remember them in your prayers. If you feel this is something you can do please fill in a slip and leave it in the box labelled prayer sponsor in the Atrium or ring Emma Tolan on 869617 or Fr William.

**CATHOLIC CARE** Looking for a new challenge? Catholic Care is seeking a Full Time Registered Manager for its children's home in Leeds. Salary £28,746 - £34,746. For further details and application pack please ring 0113 3885400 or email [janet.flynn@catholic-care.org.uk](mailto:janet.flynn@catholic-care.org.uk)

**AFRICA ENVELOPES** for 2015 are now available in the atrium. Please collect asap.

**BENEDICTINE YEARBOOK 2015** Now on sale in the shop. Articles by monks and nuns of the English Benedictine Congregation.

**GROUP CLEANING** Your help would be greatly appreciated to keep the church clean. Can you spare 1hr every 8-12 weeks? Please telephone Shirley Knowles on 07867 784 663

**WEEKLY COLLECTIONS** w/b 11 Jan: plate £215.03; envelopes £281; Votive £11.75; Building Fund £5; Second Collection (Poor Missions Fund) £96.36; Standing Orders weekly average £505. Attendance: 279.