

St. Mary's Catholic Church

A parish of Ampleforth Abbey

25 Bond End, Knaresborough, HG5 9AW

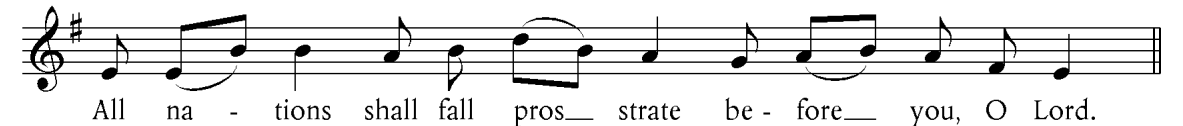
Fr. William Wright O.S.B. william@ampleforth.org.uk 01423 862388

E-mail: parish@stmarysknaresborough.org.uk Web: www.stmarysknaresborough.org

www.facebook.com/stmarysknaresborough www.twitter.com/st_marys_parish

2nd WEEK OF CHRISTMAS

EVENTS AND NOTICES



CELEBRATIONS AND MASS INTENTIONS FOR THE WEEK

2ND WEEK OF CHRISTMAS 2015/16

Sunday cycle C/weekday cycle II

Day	Rank	Mass times	Mass Intention
Sun 3 rd Jan	SOLEMNITY: THE EPIPHANY OF THE LORD	Vigil 6.00 pm	Ken Hunter
		10.00 am	Parish
		5.00 pm	Our Lady's love and peace in the family
Mon 4 th Jan	Feria	9.00 am <i>in Church</i>	A Parker
Tue 5 th Jan	Feria	7.00 pm <i>in chapel</i>	Ben
Wed 6 th Jan	Feria	9.00 am <i>in chapel</i>	Rebecca Watson
Thu 7 th Jan	Feria	No Service	
Fri 8 th Jan	Feria	7.00 pm <i>in chapel</i>	Joseph
Sat 9 th Jan	Feria	10.00 am <i>in chapel</i>	Fr Abbot
Sun 10 th Jan	FEAST: The Baptism of the Lord	Vigil 6.00 pm	Horace Greenwood
		10.00 am	Joseph & Edward Fieldhouse
		5.00 pm	Parish

GREAT AMEN



ADORATION: Each weekday beginning 45 minutes before Mass.

THE DIVINE OFFICE is recited twenty minutes before each weekday Mass

EUCHARISTIC MINISTER PRAYER: As we thank God for the gift of his Son to us in Holy Communion, let us remember those of our parish who are sick, old & housebound. May the Body and Blood of your Son, which we now send to them through our Eucharistic ministers, bring them hope, consolation & peace, through Christ our Lord.

MEMORIAL ACCLAMATION (for use throughout Year C):

Save us, Saviour of the world, for by your Cross and Resurrection you have set us free..

SACRAMENT OF RECONCILIATION (Confession) Saturday 10.30 am to 11.00 am, and by request at other times.

PRAYER GROUP Wednesday 7.00pm (Healing Prayer Group) Adoration, Lectio Divina, then prayers for inner or physical healing as required. For more information please contact Maureen 869264

ST MARY'S SVP meet fortnightly on Monday at 7.15. We welcome new members. Contact Siobhan 340179

ST JOSEPH'S TABLE: Collection of food for the homeless the first Sunday of every month. The organisers have suggested that tinned food which includes meat is particularly welcome

IN YOUR PRAYERS, PLEASE REMEMBER: Joan Akroyd, May Braythwaite, Keith Broadbelt, Brian Buckley, Terry Callaghan, Alma Corrie, Brigid Davies, Katie Deaton, David Doling, Pat Eve, Brian Greaves, Margaret Greenwood, Philip Hall, Eileen Hawkes, Barbara Hawksworth, Rosemary Hill, Eileen Huck, Anne Kehoe, Simon Kennett, Eleanor Mayhew, Dot McEvoy, Peter Owens, Joan Parsons, Mariana Robinson, Rose Smiles, Stephen Thorndike, Vitoria Windsor, Rosalind Wynne and all who are ill and those who care for them.

PLEASE PRAY FOR: Douglas Boyle, James Anthony Copeland, Martin Bernard Minogue, Sheila Agnes Stockdale, Norah Slinger, Max George Gruber, Thomas Condon, Michael Outhwaite, Thomas Pickles, Louisa Hammond, Michael Fitzgerald-Hart and all whose anniversary of death occurs at this time.

THE HOLY FATHER'S MISSION INTENTIONS

That by means of dialogue and fraternal charity and with the grace of the Holy Spirit, Christians may overcome divisions.

NEXT SUNDAY'S READINGS Is 40:1-9; Ps 103; Tit 2:11-14; 3:4-7; Lk 3:15-16, 21-22

SECOND COLLECTION this week is for the Leeds Diocesan Peru Mission. A second collection will be taken next week for the Poor Missions Fund.

LEISURE CENTRE it is St Mary's turn to serve tea and coffee this week beginning 4th January. New volunteers welcome. Phone Brenda Johnson 863253.

CHRISTMAS OFFERING On behalf of the Ampleforth Community, a sincere thank you for the Christmas Offering which totalled £1,360.45

ST JOSEPH'S TABLE. Many thanks for your immediate response to the request for help for the homeless and for needy families. This enabled us to take two large bags of hats, scarves and gloves to St Peter's for distribution on Boxing Day. Your support made a real difference and was very much appreciated.

ALADDIN PANTOMIME Friday 8th January at 7.30pm in The Old School (Church Hall). Performed by The Pocket Panto Co. Last opportunity to buy tickets this weekend - all tickets £6. Fundraiser to support the Old School project - please support. Contact Sheila on 879487/07885568856 for tickets.

DEANERY DAY OF RENEWAL Saturday 9th January 11.30 to 4.00 St. Aelred's Church HS27BE. Fr John Marsh will speak on God's Mercy and the Year of Mercy. Shared table for lunch so please bring a small contribution. More information from: Dolores Omand 01423870789 or ccrleeds.org.uk

THE LEEDS DIOCESAN DISCERNMENT group will be meeting again at 6.30pm on Thursday 14th January at St Winefride's Presbytery (54 St Paul's Avenue, Wibsey, Bradford, BD6 1ST). They will be welcoming Deacon Charlie and Mrs Marena Conner who will share experiences of their 'Rachel's Vineyard' ministry'.

BENEDICTINE YEARBOOK 2016 now available in the shop. For more info see notice board.

52 WAYS TO CELEBRATE MERCY During this Jubilee Year of Mercy. See noticeboard. Try one each week.

DIOCESAN CATHOLIC SCHOOLS & RELIGIOUS EDUCATION Training events in January, see atrium posters.

ST MARY'S PRIMARY SCHOOL ADMISSIONS Applying for a place at St Mary's for September 2016? Please complete school Supplementary Form (available from the school) and return to the school by 15 January 2016. This is in addition to completing the North Yorkshire Application Form.

INTERESTED IN TRAINING TO BECOME A TEACHER? The Bishop Wheeler Catholic Academy Trust schools are leading the way for more school-led teacher training. Please see notice board for more information.

CELEBRATION - NEED AN EVENT SPACE? Please consider using The Old School for any celebrations or events and do recommend us to all of your friends. There are two spaces for hire which can also be combined: the School Hall, with kitchen access, mood lighting and inbuilt audio system for larger events or the School Room for more intimate occasions with access to a separate kitchenette and overhead projector

GROUP CLEANING Your help would be greatly appreciated to keep the church clean. Can you spare 1hr every 8-12 weeks? Please telephone Shirley Knowles on 07867 784 663

WEEKLY COLLECTIONS Christmas: plate £836.45; envelopes £499.00; Building fund £20.00; Attendance 562. w/b 27th December: plate £157.25; envelopes £104.00; votive £2.25; Building fund £115.00; Standing Orders weekly average £527; Attendance 183.