

# St. Mary's Catholic Church

A parish of Ampleforth Abbey

25 Bond End, Knaresborough, HG5 9AW

Fr. William Wright O.S.B. [william@ampleforth.org.uk](mailto:william@ampleforth.org.uk) 01423 862388

E-mail: [parish@stmarysknaresborough.org.uk](mailto:parish@stmarysknaresborough.org.uk) Web: [www.stmarysknaresborough.org](http://www.stmarysknaresborough.org)

[www.facebook.com/stmarysknaresborough](https://www.facebook.com/stmarysknaresborough) [www.twitter.com/st\\_marys\\_parish](https://www.twitter.com/st_marys_parish)

## CELEBRATIONS AND MASS INTENTIONS FOR THE WEEK

5<sup>TH</sup> WEEK OF EASTER 2016

Sunday cycle C/weekday cycle II

Day	Rank	Mass times	Mass Intention
Sun 1 <sup>st</sup> May	<b>SIXTH SUNDAY OF EASTER</b>	Vigil 6.00 pm	
		10.00 am	<b>Parish</b>
		5.00 pm	
Mon 2 <sup>nd</sup> May	<b>Memoria: St Athanasius</b>	9.00 am <i>in chapel</i>	
Tue 3 <sup>rd</sup> May	<b>FEAST: Ss Philip and James</b>	7.00 pm <i>in chapel</i> <b>Eucharistic Service</b>	
Wed 4 <sup>th</sup> May	<b>FEAST: The English Martyrs</b>	9.00 am <i>in chapel</i>	<b>Ethna Fountain</b>
Thu 5 <sup>th</sup> May	<b>Feria</b>	No Service	
Fri 6 <sup>th</sup> May	<b>Feria</b>	7.00 pm <i>in chapel</i>	<b>James and Julia Walker</b>
Sat 7 <sup>th</sup> May	<b>Memoria: St John of Beverley</b>	10.00 am <i>in chapel</i>	<b>Fr Abbot</b>
Sun 8 <sup>th</sup> May	<b>THE ASCENSION OF THE LORD</b>	Vigil 6.00 pm	
		10.00 am	<b>Parish</b>
		5.00 pm	

**GREAT AMEN**



**ADORATION:** Each weekday beginning 45 minutes before Mass.

**THE DIVINE OFFICE** is recited twenty minutes before each weekday Mass

**EUCCHARISTIC MINISTER PRAYER:** As we thank God for the gift of his Son to us in Holy Communion, let us remember those of our parish who are sick, old & housebound. May the Body and Blood of your Son, which we now send to them through our Eucharistic ministers, bring them hope, consolation & peace, through Christ our Lord.

**MEMORIAL ACCLAMATION** (for use throughout Year C):

**Save us, Saviour of the world, for by your Cross and Resurrection you have set us free..**

**SACRAMENT OF RECONCILIATION** (Confession) Saturday 10.30 am to 11.00 am, and by request at other times.

**PRAYER GROUP** Wednesday 7.00pm (Healing Prayer Group) Adoration, Lectio Divina, then prayers for inner or physical healing as required. For more information please contact Maureen 869264

**IN YOUR PRAYERS, PLEASE REMEMBER:** Christopher Boucher, May Braythwaite, Keith Broadbelt, Brian Buckley, Terry Callaghan, Brigid Davies, Pat Devany, Vincent Doemling, David Doling, Pat Eve, Brian Greaves, Margaret Greenwood, Philip Hall, Eileen Hawkes, Barbara Hawksworth, Rosemary Hill, Eileen Huck, Eleanor Mayhew, Dot McEvoy, Peter Owens, Joan Parsons, Arthur Peters, Mariana Robinson, Rose Smiles, Stephen Thorndike, Bryan Wall, Jean Westmancoat, Rosalind Wynne and all who are ill and those who care for them.

**PLEASE PRAY FOR:** Mary Freda Bradley, Patricia Agnes Brogatzki, Catherine Mary Warneken, Ethna Mary Fountain, Ralph Wharton, Ronald Moore, Sheila Beggs-Reid, James Arthur Walker, Thomas Burke, Kathleen Wheldon and all whose anniversary of death occurs at this time.

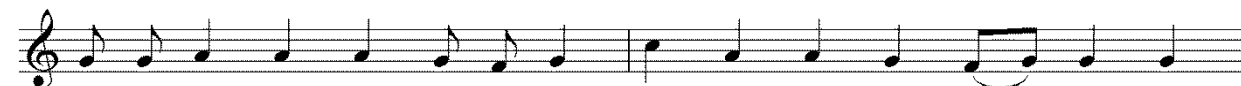
### THE HOLY FATHER'S MISSION INTENTIONS

That families, communities, and groups may pray the Holy Rosary for evangelization and peace.

AMPLEFORTH ABBEY TRUSTEES REG. CHARITY NO. 1026493

## SIXTH SUNDAY OF EASTER

### EVENTS AND NOTICES



Let the peo - ples praise you, O God; let all the peo - ples\_ praise you.

**NEXT SUNDAY'S READINGS** Acts 1:1-11; Ps 46; Heb 9:24-28; 10:19-23 or Eph1:17-23

**SECOND COLLECTION** for Catholic Communications next Sunday 8<sup>th</sup> May, at all three masses.

**REFRESHMENTS** are served in The Hall after Sunday morning Mass. Come & join us. All are welcome.

**BAPTISMS FEES** and suggested donations for use of church for baptisms were £35 and £50 respectively. Following a decision by the Finance Committee these will now be free, with no fee or donation required or expected.

**CONFIRMATION CANDIDATES** Let's pray for our young people who are preparing for the Sacrament of Confirmation. They'll be confirmed by Bishop Marcus on Tuesday 7<sup>th</sup> June at St Joseph's Wetherby.

**PARISH AGM** 8<sup>th</sup> May 2016 after Sunday 10am Mass. Agenda: 1. Evangelisation and outreach; 2. Vocations and ministry; 3. Ecumenical; 4. Demographics; 5. Safeguarding; 6. Finances; 7. Fabric; 8. Health & Safety; 9. School Governance.

**RECYCLING** The parish generates a lot of recycling material and a volunteer is needed to take this on, can you help?

**SPONSORED WALK:-** Jo, Julie & Sheila from the fundraising team will be taking part in the 20 mile Nidderdale Walk on Sunday 8<sup>th</sup> May. We are raising funds for The Old School project, & we would be grateful if you would consider sponsoring us. Sponsor sheets are available in the atrium. Thank you for your support. Photos to follow!

**NEXT SVP MEETING** will be held on Monday 9<sup>th</sup> May at 7.15 pm in 'The Old School' Church Hall.

**LEISURE CENTRE** in the week beginning 9<sup>th</sup> May it will be St Mary's turn to serve at the Leisure Centre

**THE LEEDS DIOCESAN DISCERNMENT** group are meeting at 6.30pm on Thursday 12 May at the Franciscan Sisters of the Renewal, Corpus Christi Convent, 19 Neville Road, Osmondthorpe, Leeds, LS9 0HD. We will welcome Fr Stephen Wang who is going to speak about the Sacrament of Reconciliation. A light supper will follow.

**CHILDREN'S LITURGY OF THE WORD (CLTW) - HELP NEEDED.** If you are interested in becoming involved, please contact Liz Jones on 07775 514932 or [lizzy.rigs@btinternet.com](mailto:lizzy.rigs@btinternet.com)

**200 CLUB APRIL** winners: £40 M Britton: £25 M Broadhurst: £20 C McMahon: £15 P Archibald.

**CHURCH GARDEN** If anyone would like to come along and help in the church garden, I will be working in the garden on the 1st & 3rd Tuesday each month, starting at 2pm. Any help will be very much appreciated. Thank You Sheila Lund Tel 869487/07885568856 or [sheilalund@hotmail.co.uk](mailto:sheilalund@hotmail.co.uk)

**BAQOUN DANCE GROUP.** A Palestinian Christian troupe of dancers from Bethlehem will be visiting the UK in June, including several venues in Yorkshire. For more information, visit <http://www.baqoun.org>

**GIFT AID** The new Gift Aid envelopes are available for collection in the shop. If you are no longer a tax payer please contact Ian Burrell on 01423 550046 so that the Parish records may be updated.

**THE WORDS OF JESUS** The daily mass readings give us a pretty good diet of these. To be found in your daily missal, in the Magnificat magazine, or at [www.universalis.com/mass](http://www.universalis.com/mass) or for a snippet try following @Will9i9am

**NEW APOSTOLIC EXHORTATION** 'Amoris Laetitia: The Joy of Love' from St Paul's Bookshop at Hinsley Hall £4.95

**WEEKLY COLLECTIONS** 24<sup>th</sup> April: plate £186.73; envelopes £193.00; votive £9.12; Building fund £679.46; Second Collection (Ukraine) £307.39; Standing Orders weekly average £527; Attendance 219

**For Future bulletins when there is room.**

**RECYCLING** The parish generates a lot of recycling material and a volunteer is needed to take this on, can you help?

**SHOP** Leeds Diocesan Directory and Benedictine Handbook both on sale.

**DIOCESAN PILGRIMAGE** to World Youth Day, Krakow. 22nd July- 2nd August 2016. open to anyone aged 16yrs+. Contact Hannah Hayward Diocesan Youth Officer for more information. [youth@dioceseofleeds.org.uk](mailto:youth@dioceseofleeds.org.uk), 0113 261 8000/ 07841 029715.

**SYRIAN REFUGEES – see e-mail 9<sup>th</sup> March.**

**SYRIAN REFUGEES** The British Government has announced it will accept 20,000 individuals from the Syrian Refugee camps over the next 5 years. North Yorkshire's councils have agreed to work together to support Syrian refugees and have discussed initial plans to accommodate people fleeing the war in Syria. If you can provide temporary accommodation, please register your availability through the special email address which has been set up to collate this information, [syrianaccommodation@harrogate.gov.uk](mailto:syrianaccommodation@harrogate.gov.uk) or ask Fr William to do so on your behalf. At the present time this is a data gathering exercise to find out what offers of help there will be available over the coming months. For more information see noticeboard

**WORLD YOUTH DAY PILGRIMAGE** to Krakow 22<sup>nd</sup> Jul - 2<sup>nd</sup> Aug 2016: There are a few remaining places on the diocesan pilgrimage for young people aged between 16-30 years old. Contact [youth@dioceseofleeds.org.uk](mailto:youth@dioceseofleeds.org.uk) or 07841 029715 as soon as possible, if you wish to attend or would like more information.

**SHOP** Leeds Diocesan Directory and Benedictine Handbook both on sale.

**ST JOSEPH'S TABLE:** Collection of food for the homeless the first Sunday of every month. The organisers have suggested that tinned food which includes meat is particularly welcome

**LEEDS DIOCESAN YEAR OF MERCY** Twitter account. Please do follow us and receive daily news updates, prayer ideas and resources from all over the world, to help you celebrate the Year of Mercy. Find us: @Year\_MercyLEEDS

**AFTER MASS** please remember to take out what you brought in. Let's keep the Church and Atrium clean and tidy. Hymn books should be placed upright on the shelves in the bookcase.

**52 WAYS TO CELEBRATE MERCY** During this Jubilee Year of Mercy. See noticeboard. Try one each week.

**CELEBRATION – NEED AN EVENT SPACE?** Please consider using The Old School for any celebrations or events and do recommend us to all of your friends. There are two spaces for hire which can also be combined: the School Hall, with kitchen access, mood lighting and inbuilt audio system for larger events or the School Room for more intimate occasions with access to a separate kitchenette and overhead projector.

**BENEDICTINE YEARBOOK 2016** now available in the shop. For more info see notice board.

**GROUP CLEANING** Your help would be greatly appreciated to keep the church clean. Can you spare 1hr every 8-12 weeks? Please telephone Shirley Knowles on 07867 784 663

**AFTER MASS** please remember to take out what you brought in. Let's keep the Church and Atrium clean and tidy. Hymn books should be placed upright on the shelves in the bookcase.

**FOUNDATIONS IN FAITH:** A Course of Catholic Faith Formation. Beginning at Hinsley Hall in September 2016. For further information contact the administrator on 0113 261 8040 or [evangelisation.admin@dioceseofleeds.org.uk](mailto:evangelisation.admin@dioceseofleeds.org.uk)

**WHEN YOU'RE SICK** please remember to let Fr William know when you go into the hospital. The hospital does not contact him. Similarly, please let him know when you are discharged from hospital.

**PLEASE REMEMBER:** We do **NOT** have use of St John's car park on **Sunday mornings**. Please respect this.

**REFRESHMENTS** Following a suggestion in the returns of the Easter Appraisal there will be refreshments in the Atrium for all after the Sunday 5pm Mass occasionally, perhaps once a month. It started Sunday 19th July. Please do come and join us. All welcome.

**MASS INTENTIONS:** If you wish a Mass to be celebrated for a particular intention, please use the orange envelopes available in the Atrium. Please put them through the letter box, on the collection plate, or give them to Fr William.

**CHURCH GARDEN** Weekly gardening group meeting 1pm - 3pm each Wednesday afternoon in the church garden (weather permitting). Please come along & help care for our church garden. All offers of help are most welcome.

**HARROGATE FOOD ANGELS** deliver meals on wheels in Harrogate and Knaresborough and are looking for volunteers. Contact Gill or Gaynor on 888083 or email [foodangels@hnha.co.uk](mailto:foodangels@hnha.co.uk)

**ST JOSEPH'S TABLE:** Collection of food for the homeless the first Sunday of every month. The organisers have suggested that tinned food which includes meat is particularly welcome

**GROUP CLEANING** Your help would be greatly appreciated to keep the church clean. Can you spare 1hr every 8-12 weeks? Please telephone Shirley Knowles on 07867 784 663

**CHURCH GARDEN** Weekly gardening group meeting 1pm - 3pm each Wednesday afternoon in the church garden (weather permitting). Please come along & help care for our church garden. All offers of help are most welcome.

**GARDEN BENCHES** Information about the four garden benches and the people indicated on the commemoration plates (Pat Honey, Ellerker family, Hawkes family) would be gratefully received, as would offers to renovate/repair. [william@ampleforth.org.uk](mailto:william@ampleforth.org.uk)

**ST MICHAEL'S HOSPICE SEEKS VOLUNTEER VISITORS.** Do you feel you could spare a couple of hours a week for this rewarding role? Please contact Emmi Wainwright 867085 [ewainwright@saintmichaelshospice.org](mailto:ewainwright@saintmichaelshospice.org) and check the further details on the poster in the Atrium.

**CHILDREN'S LITURGY NEEDS YOUR HELP** We desperately need volunteers to help with children's liturgy 10am Mass. You would be fully supported by existing leaders. We are so low on volunteers that if we do not get more help we will need to consider reducing how often we have children's liturgy. Please pray for the children's liturgy and consider if you could help them. Please contact Emma on 07807436217 or email [dreltolan@gmail.com](mailto:dreltolan@gmail.com)

**BACON BUTTY SUNDAY** Come and join us for bacon rolls and coffee in the Parish Hall on Sunday morning after Mass. Bacon rolls are served on the first Sunday each month. Fundraising for the Parish Hall refurbishment.

**SUPPORTING THE PARISH WITH YOUR SKILLS** If anybody in the parish has particular skills that might be helpful to the parish and would be willing to be on call to give advice or practical assistance, please do get in touch. [william@ampleforth.org.uk](mailto:william@ampleforth.org.uk) or catch me after mass. Eg Financial, mechanical, electrical, construction, legal, IT, personnel (I think it's now called HR), or any other experience that you think might be of service to the parish.

**SNOW SHOVELLING** Would anybody be willing to be on call to help with snow shovelling the church car park? Please contact Fr William: [william@ampleforth.org.uk](mailto:william@ampleforth.org.uk)

**MARRIAGE ENCOUNTER WEEKEND** is an opportunity for couples to grow in love for each other, It is a unique way to revitalise marriage. Visit [www.wvme.org.uk](http://www.wvme.org.uk) for more information and dates when Marriage Encounter Weekend is happening.

**SCHOOL VOLUNTEERS** Do you have an hour or two to spare each week? Perhaps you might think about joining us at St Mary's Catholic Primary School as a volunteer. If you would like to find out more please contact Mr Lee Talbot, Headteacher, on 01423 864631.

**SAFEGUARDING** the Protection of Children and Vulnerable Adults. If you have any concerns or questions relating to Safeguarding please contact your Parish Safeguarding representative Mrs Joanne Brennan on 0781 292 607 or 01423 331900 or Father William Wright on 01423 862388 If you wish to contact the Diocese (to whom Safeguarding issues are referred) please contact The Diocesan Protection Co-ordinator Ms Suzanne Mitchell 0113 261 8059 or 0113 261 8046 In an emergency please contact the Police.

volunteers are appealing to anyone in the parish who can help with light weeding and hoeing. If you can help in any way please contact Sheila Lund 07885 568856 or Angela Wicken 07800 887392.

**CHURCH SHOP OPENING TIMES** after 6pm Mass on Saturday, after 10am and 5pm Masses on Sunday and on request. Cards, gifts and children's books are currently available. The shop also sells a range of religious and Fair Trade items. **Mass Books** for different age groups (new translation) now in the shop at £3.99 and £3.95.

**A REMINDER!** Cheques should be made payable to Ampleforth Abbey Trustees, **NOT** to St Mary's Church.

**GO SLOW** Please could we all drive really slowly and carefully on Church Lane for safety, and for consideration of the residents. Max speed 5 mph.

**KNIGHTS OF ST COLUMBA** When our faith is attacked. When our Church and Clergy need our support. When there is a need for Charity. In This Year of Faith the Knights of St Columba are offering an Opportunity to Serve. Britain's largest Order of Catholic Laymen is inviting all men over the age of 16 to join us in the fight for the Sanctity of Life from Conception to a Natural death. [www.ksc.org.uk](http://www.ksc.org.uk) Email: [headoffice@ksc.org.uk](mailto:headoffice@ksc.org.uk) Tel 0141 883 5700

**EASYFUNDRAISING/EASYSEARCH** Have you signed up yet? Raise funds for free when shopping on line/browsing the web, for St Mary's. Register at [www.easyfundraising.org.uk](http://www.easyfundraising.org.uk) Cause – St Mary's RC Church Knaresborough.

**ICHTHUS** Resource for years 6 and below to help families prepare for the following Sunday Mass. This is now available through our school. For anybody not attending St Mary's these can still be obtained from Fr William.

**WEDDING ARRANGEMENTS SHOULD BE MADE AT LEAST SIX MONTHS IN ADVANCE:** Couples asking for marriage over the next year or so should contact Fr William as soon as possible.

**BAPTISM:** If you are asking to have your baby baptised in the next few months, and have not received any instructions on the Sacrament of Baptism, please contact Fr William.

**SECURITY** If you need access to the carpark from the hall, please ask the keyholders to unlock the door to the steps for you so that it can be properly secured afterwards.

**PREGNANT? CRISIS?** Not sure what to do? Or had an abortion and need to talk to someone who understands? Call LIFE on 0800 915 4600 or visit [www.lifecharity.org.uk](http://www.lifecharity.org.uk) LIFE can also offer speakers to primary and secondary schools.

**TRANSPORT TO AND FROM MASS.** Do you need transport to get to Mass at the weekend? Are you willing to help to transport those who need transport? Please provide details on the list on the atrium noticeboard.

**GIFT AID AND STANDING ORDERS** Thank you to all Parishioners who have amended their standing orders for the benefit of St. Mary's Church. For those Parishioners who still intend to complete the Standing Order Mandate forms, will you please insert your name in the box on the form headed "Ref. for Statement". Similarly, for Parishioners intending to set up a standing order on-line, will you please insert your name in the "Reference" field. This greatly assists us in identifying Parishioners for Gift Aid purposes.

**FIRE DOORS please do not** use these as normal exits. They cannot be shut properly from outside leaving the building unsecured. This tends to upset our security system!