

St. Mary's Catholic Church

A parish of Ampleforth Abbey

25 Bond End, Knaresborough, HG5 9AW

Fr. William Wright O.S.B. william@ampleforth.org.uk 01423 862388

E-mail: parish@stmarysknaresborough.org.uk **Web:** www.stmarysknaresborough.org

www.facebook.com/stmarysknaresborough www.twitter.com/st_marys_parish

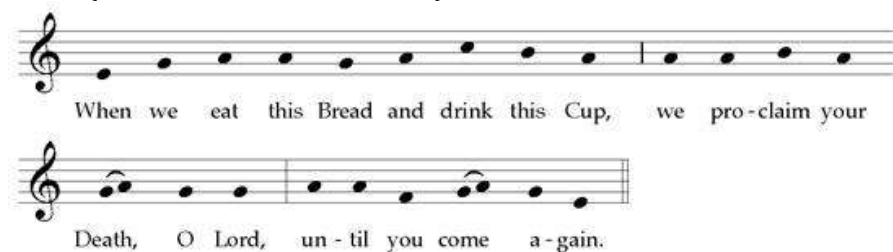
CELEBRATIONS AND MASS INTENTIONS FOR THE WEEK

CHRISTMAS TIME

Sunday cycle B/weekday cycle II

Day	Rank	Mass times	Mass Intention
Sun 31 st Dec	THE HOLY FAMILY OF JESUS, MARY AND JOSEPH	Sat 6.00 pm 10.00 am 5.00 pm	Parish Pat Roche Family and Friends
Mon 1 st Jan	SOLEMNITY OF MARY, THE HOLY MOTHER OF GOD	10.00 am in chapel	Frances Fitzgerald-Hart
Tue 2 nd Jan	Memoria – Ss Basil the Great and Gregory Nazianzen	7.00 pm in chapel	Families, Friends & Benefactors
Wed 3 rd Jan	Feria	9.00 am in chapel	Loreto and Marghrita Rea
Thu 4 th Jan	Feria	No service	
Fri 5 th Jan	Feria	7.00 pm in chapel	Fernanda
Sat 6 th Jan	Feria	10.00 am in chapel	EBC
Sun 7 th Jan	THE EPIPHANY OF THE LORD	Sat 6.00 pm 10.00 am 5.00 pm	Horace Greenwood Joseph Parish

MEMORIAL ACCLAMATION (FOR USE THROUGHOUT YEAR B):



ADORATION: Each weekday beginning 45 minutes before Mass.

THE DIVINE OFFICE is recited twenty minutes before each weekday Mass

SACRAMENT OF RECONCILIATION (Confession) Saturday 10.30 am to 11.00 am, and by request at other times.

PRAYER GROUP: We are now meeting **2pm Wednesday** (Healing Prayer Group) for Adoration, Lectio Divina and prayers for inner or physical healing as required. For more information please contact Maureen 869264

IN YOUR PRAYERS, PLEASE REMEMBER: Harry Boucher, May Braythwaite, Keith Broadbelt, Brian Buckley, Paul Busby, Terry Callaghan, Dawn Conrardy, Peter Coultas, Brigid Davies, Vincent Doemling, David Doling, Lyze Dudley, Pat Eve, John Gillespie, Brian Greaves, Rosemary Hill, Gillian Hope, Mark Howson, Dorothy Leachman, Bridget Linnie, Eleanor Mayhew, Peter Owens, Emma Reed, Mariana Robinson, Rose Smiles, Stephen Thorndike, Jean Westmancoat, Rosalind Wynne and all who are ill and those who care for them.

PLEASE PRAY FOR: Elizabeth Encell, Anne Watson, Anne Coman, William Wilson, John Smith, Barbara Nyoka, Mark Vizockie, Maude Elland Perkins, Fr Anthony Spiller, Tom Hoyes, Edward McGhee and all whose anniversary of death occurs at this time.

THE HOLY FATHER'S PRAYER INTENTIONS

That the elderly, sustained by families and Christian communities, may apply their wisdom and experience to spreading the faith and forming the new generations.

THE HOLY FAMILY OF JESUS, MARY AND JOSEPH



NEXT SUNDAY'S READINGS: Is 60:1-6; Ps 71; Eph 3:2-3a, 5-6; Mt 2:1-12

SECOND COLLECTION on 13th January will be for the Poor Missions Fund.

CHILDREN'S LITURGY will not take place on 31st December or 7th January.

HARROGATE DISTRICT OF SANCTUARY Jenny Travena will explain more on 20th and 21st January.

ST MARY'S PRIMARY SCHOOL are now accepting applications for admissions for Sept 2018 if your child is 4 before the 31st August 2018. Complete the online form at www.northyorks.gov.uk/admissions and complete a St Mary's Supplementary Information Form, from www.stmaryscps.org, and return to school by 15th Jan 2018.

ST MARYS PRIMARY SCHOOL NURSERY PROVISION - The Academy Council of St Mary's is **proposing** to provide new early years provision for 3-4 year olds from September 2018. They would like to hear the views of parents and other members of the community. See poster in Atrium or school website www.stmaryscps.org.

THE BRILLIANT POCKET PANTO returns- Cinderella Friday 5th January. Call Jo Brennan 07853 292607.

SVP Next meeting 8th January 2018 at 6.45 pm in the Old School. Contact us on 07470312709

SNOW SHOVELLING Would anybody be willing to be on call to help with snow shovelling the church car park? Please contact Fr William: william@ampleforth.org.uk

THE OLD SCHOOL: Arranging a celebration or needing to book a room? The Old School Hall and Meeting Room are available for hire. For more details or to arrange a viewing or a booking please contact the Manager, Steven Perry on 01423 862913, stevenhperry@ntlworld.com or find us on the parish website.

PARISH VOLUNTEERS Our parish is run entirely by volunteers, a lot of volunteers. If you would like to contribute your skills and a bit of your time, please email me at william@ampleforth.org.uk and give me an idea of your current skills and experience. Your help in running the parish will be much appreciated.

WHEN YOU'RE SICK please remember to let Fr William know when you go into the hospital. The hospital does not contact him. Similarly, please let him know when you are discharged from hospital.

WEEKLY COLLECTIONS 24th December: Plate £176.62; Envelopes £98.00; Votive: £27.84; Building Fund £5.00; Standing Orders weekly average £584.00. Attendance 154. Christmas: Plate £893.68; Envelopes £60.00; Christmas Offerings £220.00. Attendance 126.