

# St. Mary's Catholic Church

A parish of Ampleforth Abbey

25 Bond End, Knaresborough, HG5 9AW

Fr. William Wright O.S.B. [william@ampleforth.org.uk](mailto:william@ampleforth.org.uk) 01423 862388

E-mail: [parish@stmarysknaresborough.org.uk](mailto:parish@stmarysknaresborough.org.uk) Web: [www.stmarysknaresborough.org](http://www.stmarysknaresborough.org)

[www.facebook.com/stmarysknaresborough](https://www.facebook.com/stmarysknaresborough) [www.twitter.com/st\\_marys\\_parish](https://www.twitter.com/st_marys_parish)

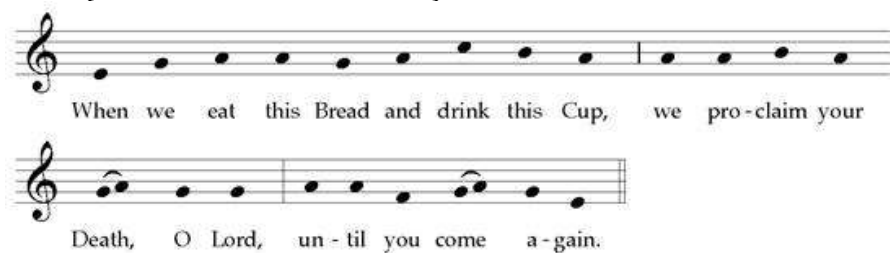
## CELEBRATIONS AND MASS INTENTIONS FOR THE WEEK

CHRISTMASTIDE AND ORDINARY TIME

Sunday cycle B/weekday cycle II

Day	Rank	Mass times	Mass Intention
Sun 7 <sup>th</sup> Jan	<b>THE EPIPHANY OF THE LORD</b>	Sat 6.00 pm 10.00 am 5.00 pm	<b>Horace Greenwood</b> <b>Joseph</b> <b>Parish</b>
Mon 8 <sup>th</sup> Jan	<b>FEAST: Baptism of the Lord</b>	9.00 am <i>in chapel</i>	<b>Marco &amp; Maria Rea</b>
Tue 9 <sup>th</sup> Jan	<b>Feria</b>	7.00 pm <i>in chapel</i>	<b>Joseph</b>
Wed 10 <sup>th</sup> Jan	<b>Feria</b>	9.00 am <i>in chapel</i>	<b>Deceases of Fitzgerald-Hart Family</b>
Thu 11 <sup>th</sup> Jan	<b>Feria</b>	No service	
Fri 12 <sup>th</sup> Jan	<b>Feria</b>	7.00 pm <i>in chapel</i>	<b>Patrick</b>
Sat 13 <sup>th</sup> Jan	<b>Feria</b>	10.00 am <i>in chapel</i>	<b>Fr Abbot</b>
Sun 14 <sup>th</sup> Jan	<b>2<sup>ND</sup> SUNDAY IN ORDINARY TIME</b>	Sat 6.00 pm 10.00 am 5.00 pm	<b>Richard Fitzgerald-Hart</b> <b>Parish</b> <b>Vincenzo &amp; Brigida Sciaro</b>

### MEMORIAL ACCLAMATION (FOR USE THROUGHOUT YEAR B):



**ADORATION:** Each weekday beginning 45 minutes before Mass.

**THE DIVINE OFFICE** is recited twenty minutes before each weekday Mass

**SACRAMENT OF RECONCILIATION** (Confession) Saturday 10.30 am to 11.00 am, and by request at other times.

**PRAYER GROUP:** We are now meeting **2pm Wednesday** (Healing Prayer Group) for Adoration, Lectio Divina and prayers for inner or physical healing as required. For more information please contact Maureen 869264

**IN YOUR PRAYERS, PLEASE REMEMBER:** Harry Boucher, May Braythwaite, Keith Broadbelt, Brian Buckley, Paul Busby, Terry Callaghan, Dawn Conrardy, Peter Coultas, Brigid Davies, Vincent Doemling, David Doling, Lyze Dudley, Pat Eve, John Gillespie, Brian Greaves, Rosemary Hill, Gillian Hope, Mark Howson, Dorothy Leachman, Bridget Linnie, Eleanor Mayhew, Peter Owens, Emma Reed, Mariana Robinson, Rose Smiles, Stephen Thorndike, Jean Westmancoat, Rosalind Wynne and all who are ill and those who care for them.

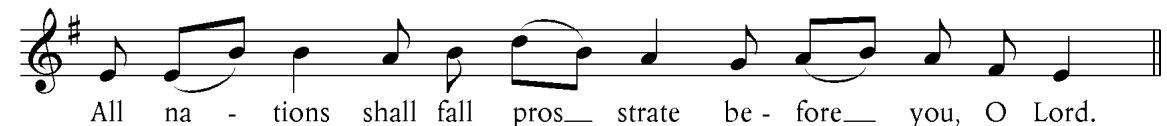
**PLEASE PRAY FOR:** Max George Gruber, Thomas Condon, Michael Outhwaite, Thomas Pickles, Louise Hammond, Michael Fitzgerald-Hart, Ann Joy Green, Cyril Scathard, Matthew Ernest Goundry, James Mackey, Joseph Czupczk and all whose anniversary of death occurs at this time.

### THE HOLY FATHER'S PRAYER INTENTIONS

That Christians, and other religious minorities in Asian countries, may be able to practice their faith in full freedom.

AMPLEFORTH ABBEY TRUSTEES REG. CHARITY NO. 1026493

## THE EPIPHANY OF THE LORD



**NEXT SUNDAY'S READINGS:** 1 Sam 3:3b-10, 19; Ps 39; 1 Cor 6:13c-15a, 17-20; Jn 1:35-42

**SECOND COLLECTION** this week is for the Building Fund

**SVP** Next meeting 8<sup>th</sup> January 2018 at 6.45 pm in the Old School. Contact us on 07470312709

**CHILDREN'S LITURGY** begins again next Sunday 14<sup>th</sup> Jan.

**SATURDAY 13<sup>TH</sup> JANUARY** 10.00am Sacrament of Reconciliation – group celebration. This is for all those who have had their first celebration of the sacrament ('First Confession') this Advent. No 10.00am Mass or 10.30am Confessions that day.

**SACRAMENT OF CONFIRMATION** Preparation course begins soon leading to the Sacrament of Confirmation around Pentecost (May 2018). This is for those in Year 7 and Year 8 (or above). Please email me this week if you would like your child to be enrolled. [william@ampleforth.org.uk](mailto:william@ampleforth.org.uk) or catch me after Mass.

**NEXT DEANERY DAY** of renewal will be on Saturday 13<sup>th</sup>. January. See poster in the Atrium.

**SEE POSTER** in the Atrium for information on: (1) Our diocesan refugee response one year on and Handmaids women's prayer meeting, (2) Encountering our Muslim Neighbours, (3) Catechist Formation Course 2018, (4) Bernardine Cistercians Weekend.

**GENTLE EXERCISE CLASSES** at St. Mary's Church Hall every Thursday 10am. See poster in the Atrium.

**HARROGATE DISTRICT OF SANCTUARY** Jenny Travena will explain more on 20<sup>th</sup> and 21<sup>st</sup> January. See poster in the Atrium.

**ST MARY'S PRIMARY SCHOOL** are now accepting applications for admissions for Sept 2018 if your child is 4 before the 31st August 2018. Complete the online form at [www.northyorks.gov.uk/admissions](http://www.northyorks.gov.uk/admissions) and complete a St Mary's Supplementary Information Form, from [www.stmaryscps.org](http://www.stmaryscps.org), and return to school by 15th Jan 2018.

**ST MARYS PRIMARY SCHOOL NURSERY PROVISION** - The Academy Council of St Mary's is **proposing** to provide new early years provision for 3-4 year olds from September 2018. They would like to hear the views of parents and other members of the community. See poster in Atrium or school website [www.stmaryscps.org](http://www.stmaryscps.org).

**SNOW SHOVELLING** Would anybody be willing to be on call to help with snow shovelling the church car park? Please contact Fr William: [william@ampleforth.org.uk](mailto:william@ampleforth.org.uk)

**THE OLD SCHOOL:** Arranging a celebration or needing to book a room? The Old School Hall and Meeting Room are available for hire. For more details or to arrange a viewing or a booking please contact the Manager, Steven Perry on 01423 862913, [stevenhperry@ntlworld.com](mailto:stevenhperry@ntlworld.com) or find us on the parish website.

**SECOND COLLECTION** on 14<sup>th</sup> January will be for the Poor Missions Fund.

**WEEKLY COLLECTIONS** 1<sup>st</sup> January: Plate £259.49; Envelopes £178.00; Votive: £11.65; Building Fund £1010.20; Standing Orders weekly average £584.00. Attendance 191.