

# St. Mary's Catholic Church

A parish of Ampleforth Abbey

25 Bond End, Knaresborough, HG5 9AW

Fr. William Wright O.S.B. [william@ampleforth.org.uk](mailto:william@ampleforth.org.uk) 01423 862388

E-mail: [parish@stmarysknaresborough.org.uk](mailto:parish@stmarysknaresborough.org.uk) Web: [www.stmarysknaresborough.org](http://www.stmarysknaresborough.org)

[www.facebook.com/stmarysknaresborough](https://www.facebook.com/stmarysknaresborough) [www.twitter.com/st\\_marys\\_parish](https://www.twitter.com/st_marys_parish)

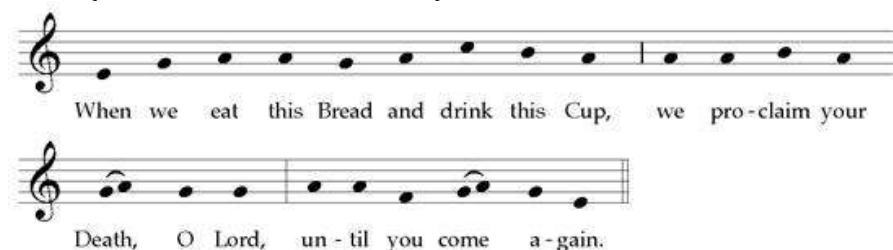
## CELEBRATIONS AND MASS INTENTIONS FOR THE WEEK

11<sup>TH</sup> WEEK OF ORDINARY TIME

Sunday cycle B/weekday cycle II

Day	Rank	Mass times	Mass Intention
Sun 17 <sup>th</sup> Jun	<b>ELEVENTH SUNDAY IN ORDINARY TIME</b>	Sat 6.00 pm Sun 10.00 am Sun 5.00 pm	<b>Margaret Parish</b>
Mon 18 <sup>th</sup> June	<b>Feria</b>	<b>No Service</b>	
Tue 19 <sup>th</sup> June	<b>Feria</b>	Eucharistic service 7.00 pm <i>in chapel</i>	
Wed 20 <sup>th</sup> June	<b>Memorial: St Anthony of Padua</b>	Eucharistic service 9.00 am <i>in chapel</i>	
Thu 21 <sup>st</sup> June	<b>Memorial: St Aloysius Gonzaga</b>	<b>No Service</b>	
Fri 22 <sup>nd</sup> Jun	<b>FEAST: St John Fisher &amp; Thomas More, Martyrs</b>	Eucharistic service 7.00 pm <i>in chapel</i>	
Sat 23 <sup>rd</sup> Jun	<b>Feria</b>	Eucharistic service 10.00 am <i>in chapel</i>	<b>Fr Abbot</b>
Sun 24 <sup>th</sup> Jun	<b>THE NATIVITY OF ST JOHN THE BAPTIST</b>	Sat 6.00 pm Sun 10.00 am Sun 5.00 pm	<b>Parish</b>

**MEMORIAL ACCLAMATION** (FOR USE THROUGHOUT YEAR B):



**ADORATION:** Each weekday beginning 45 minutes before Mass.

**THE DIVINE OFFICE** is recited twenty minutes before each weekday Mass

**PRAYER GROUP:** We are now meeting **2pm Wednesday** (Healing Prayer Group) for Adoration, Lectio Divina and prayers for inner or physical healing as required. For more information please contact Maureen 869264

**PRAYER REQUESTS** (e.g. for sick)

To protect the privacy of all our parishioners please could all prayer requests be re-requested to Fr William, preferably by email: [william@ampleforth.org.uk](mailto:william@ampleforth.org.uk)

**PLEASE PRAY FOR:** Anthony Murphy, George Foxton, Winifred Legg, Bernard Starrs, Richard Bickford and all whose anniversary of death occurs at this time.

### THE HOLY FATHER'S PRAYER INTENTIONS

That social networks may work towards that inclusiveness which respects other for their differences.

## ELEVENTH SUNDAY IN ORDINARY TIME



**NEXT SUNDAY'S READINGS:** Is 49: 1-6; Ps 138; Acts 13:22-26; Lk 1:57-66, 80

**SECOND COLLECTION** on 24<sup>th</sup> June for Peter's Pence.

**PARISH PRIEST ABSENCE** I'll be away on holiday until 21<sup>st</sup> June. Fr Michael will be celebrating Mass with you as usual in my absence.

**SVP:** Next meeting Monday 18<sup>th</sup> June at 7.00 pm in the Parish Meeting Room.

**ANNUAL PARISH BBQ** will be held on Saturday 7<sup>th</sup> July at 7 pm. Pre booking please as this is catered event at £8 per adult £4 per child (to y6 primary school). Includes BBQ salad bar and dessert. A Licensed bar also provided, please contact Jo Brennan 07853 292607 or Jules Finn 078104 30093 to reserve your tickets. Tickets will be on sale and can be collected on weekend 30<sup>th</sup> June

**CHURCH GARDEN OPEN WEEKEND:** The church garden will be open to the public as part of 'The Hidden Gardens of Knaresborough weekend of 23<sup>rd</sup> & 24<sup>th</sup> June, with ticket sales this year supporting Dementia Forward. In order to show the garden at the best it can be, we very small team of gardeners could do with some help. We will be gardening each Tuesday & Thursday afternoon at 2pm. Please come & help if you can.

**FUNDRAISING THANKS** The Fundraising team wish to thank you all for your continued support of events. The Evening with Wild Orchid raised £375 and The Bedrace cafe £875. Sponsorship for Jo & Jules on the Nidderdale Way is at around £500 to date (anyone still wanting to donate or to pay Sponsorship please contact Amanda Kelly 883340). Your support of all events is greatly appreciated.

**REVELATION YOUTH EVENT AT LEEDS CATHEDRAL:** Tuesday 26<sup>th</sup> June 6.30-8.30 pm. An event for young people (y 8-13) from across the diocese. If you plan to attend please contact [youth:@dioceseoflededs.org.uk](mailto:youth:@dioceseoflededs.org.uk)

**HANDMAIDS WOMEN'S PRAYER MEETING** scheduled for July has been cancelled. Next meeting will be 3<sup>rd</sup> August. For more information call 0113 2350573

**THE FRIENDS OF THE BRIERY** are hosting a Garden Party on Sunday 1<sup>st</sup> July 2-4 pm. Scones, tea, prosecco, tombola, raffle, book stall, live music from Sally's Army choir and a jazz and soul band from St Mary's School Menston. This is a Free, no ticket event but RSVP to [briery@btconnect.com](mailto:briery@btconnect.com) or 01943 607287

**CORPUS CHRISTI PROCESSION** 24<sup>th</sup> June 2018, Hinsley Hall, Poster in the Atrium

**PARISH WEBSITE** If you don't have access to the parish website and would like to view it and discuss ways to access it, please contact Carmel Bridson on 01423 868783 or Teresa Britton on 07682717275

**PARISH VOLUNTEERS** Our parish is run entirely by volunteers, a lot of volunteers. If you would like to contribute your skills and a bit of your time, please email me at [william@ampleforth.org.uk](mailto:william@ampleforth.org.uk) and give me an idea of your current skills and experience. Your help in running the parish will be much appreciated.

**WEEKLY COLLECTIONS** 10<sup>th</sup> June: Plate £215.83; Envelopes £117.10; Votive £4.51; Building Fund £875.14; Second Collection (Day For Life) £107.55; Standing Orders weekly average £610.00. Attendance 176