

# St. Mary's Catholic Church

A parish of Ampleforth Abbey

25 Bond End, Knaresborough, HG5 9AW

Fr. William Wright O.S.B. [william@ampleforth.org.uk](mailto:william@ampleforth.org.uk) 01423 862388

E-mail: [parish@stmarysknaresborough.org.uk](mailto:parish@stmarysknaresborough.org.uk) Web: [www.stmarysknaresborough.org](http://www.stmarysknaresborough.org)

[www.facebook.com/stmarysknaresborough](https://www.facebook.com/stmarysknaresborough) [www.twitter.com/st\\_marys\\_parish](https://www.twitter.com/st_marys_parish)

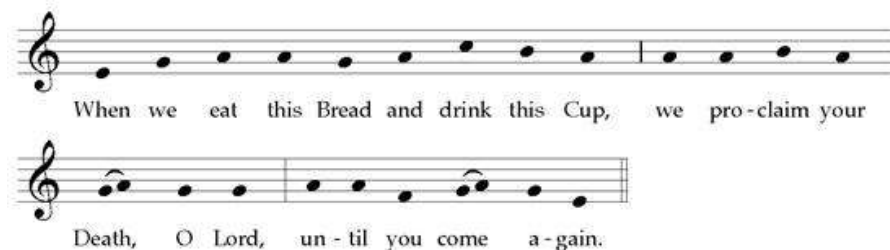
## CELEBRATIONS AND MASS INTENTIONS FOR THE WEEK

29<sup>TH</sup> WEEK OF ORDINARY TIME

Sunday cycle B/weekday cycle II

Day	Rank	Mass times	Mass Intention
Sun 21 <sup>st</sup> Oct	<b>TWENTY NINTH SUNDAY IN ORDINARY TIME</b>	Sat 6.00 pm Sun 10.00 am Sun 5.00 pm	<b>Adrian Finn</b> <b>Parish</b> <b>Adrian Finn</b>
Mon 22 <sup>nd</sup> Oct	<b>Feria</b>	9.00 am <i>in Chapel</i>	<b>Mary Warr</b>
Tue 23 <sup>rd</sup> Oct	<b>Feria</b>	7.00 pm <i>in Chapel</i>	
Wed 24 <sup>th</sup> Oct	<b>Feria</b>	Eucharistic Service 9.00 am <i>in Chapel</i>	
Thu 25 <sup>h</sup> Oct	<b>Feria</b>	No Service	
Fri 26 <sup>th</sup> Oct	<b>Feria</b>	7.00 pm <i>in Chapel</i>	<b>Cathy Binns</b>
Sat 27 <sup>th</sup> Oct	<b>Feria</b>	10.00 am <i>in Chapel</i>	
Sun 28 <sup>th</sup> Oct	<b>THIRTIETH SUNDAY IN ORDINARY TIME</b>	Sat 6.00 pm Sun 10.00 am Sun 5.00 pm	<b>Muriel Farrar</b> <b>Maureen Johnson</b> <b>Parish</b>

**MEMORIAL ACCLAMATION** (FOR USE THROUGHOUT YEAR B):



**ADORATION:** Each weekday beginning 45 minutes before Mass.

**THE DIVINE OFFICE** is recited twenty minutes before each weekday Mass

**PRAYER GROUP:** We are now meeting **2pm Wednesday** (Healing Prayer Group) for Adoration, Lectio Divina and prayers for inner or physical healing as required. For more information please contact Maureen 869264

**IN YOUR PRAYERS, PLEASE REMEMBER:** Harry Boucher, Torben Jacob Cartey, Victoria Fulcher, Dorothy Leachman, Eleanor Mayhew and all who are ill and those who care for them.

To protect the privacy of all our parishioners please could all prayer requests be re-requested to Fr William, preferably by email: [william@ampleforth.org.uk](mailto:william@ampleforth.org.uk)

**PLEASE PRAY FOR:** Richard Darke who died recently, Fred Thomas, Angela Plummer, John Harper, Jean Obradovic, Adrian Finn, Dorothy Anderton, Anastasio Vaz, Mary Holmes, Charles Kaye, Kate Carass, Winifred Gilyead, Sheila Newbould, Cathy Binns, Christopher McAvoy, Mary Doyle, Wendy Pickersgill and all whose anniversary of death occurs at this time.

### THE HOLY FATHER'S PRAYER INTENTIONS

That consecrated religious men and women may bestir themselves, and be present among the poor, the marginalized, and those who have no voice.

## TWENTY NINTH SUNDAY IN ORDINARY TIME



**NEXT SUNDAY'S READINGS:** Jer 31:7-9; Ps 125; Heb 5:1-6; Mk 10:46-52

**WORLD MISSION SUNDAY** this Sunday the Pope invites

**PARISH SVP** Next meeting, Monday 22<sup>nd</sup> October, 7.15pm in the Parish Meeting Room

**PRAY FOR THE CHURCH** The Pope has asked the 'Pope's Worldwide Prayer Network' to help all the faithful to pray more intensely for the Church this October and has invited us all to use the website [www.prayforthechurch.org](http://www.prayforthechurch.org) to help us to do so.

**NOVEMBER MASSES** I'll be away 7th to 23rd November with Fr Michael Smith celebrating mass with the parish on Sundays 11th and 18th. I'll be celebrating mass while away and can take a few mass intentions with me if anybody would like.

**FOUNDATION GOVERNORS** St. Mary's Primary School is looking for Foundation Governors. Foundation governors are appointed by the Bishop to be responsible for the Catholic ethos of the school and to hold school leaders to account for educational standards and financial performance. They must be practising Catholics over 18 and committed to attending two meetings per term and visiting the school. The school would be particularly interested to hear from individuals who have an interest in education and particular skills in finance, marketing or human resources. If you have an interest, please contact Fr. William or the headteacher at the school. Closing date for expressions of interest is Friday 26th October 2018.

**NEWMAN CIRCLE** Prof Stefano Cracolici: 'Mater Admirabilis' the birth of a global sacred icon, Tuesday October 30th, Middlesbrough Cathedral at 7.45pm, coffee from 7.30pm. All welcome.

**"CHRISTMAS WITH A CONSCIENCE"** Harrogate Fairtrade Group are holding their first Ethical Christmas Shopping Event on Sat 10th November, 10am - 4pm at Henshaws Arts and Crafts Centre. There will be stalls, refreshments, a raffle, music, and children's craft activities. The event will be opened by Mrs Margaret Sentamu. Free entry.

**NATIVITY 2018** Gathering and a read through of the script for all those interested on Wednesday 14th November from 6pm to 7:30pm at Gracious Street Methodist Church

**STEPHEN HOUGH PIANO CONCERT** Wesley Centre Harrogate Saturday 17<sup>th</sup> November 7.30pm. Tickets £16 (£8 for 26 and under). See poster in the atrium for full programme and details.

**FORTY DAYS FOR LIFE** continues daily until 4th Nov 7am-7pm. This is a peaceful, prayerful vigil outside Marie Stopes Abortion Centre, Barrack Road, Leeds LS7 4AB. Further information from Chris Redding 07815681343

**VACANCIES** Hinsley Hall Pastoral and Conference Centre is recruiting a Duty Manager and a Receptionist, closing date 18<sup>th</sup> November for both position. For more details visit [www.dioceseofleeds.org.uk/vacancies](http://www.dioceseofleeds.org.uk/vacancies)

**DIOCESE OF LEEDS SAFEGUARDING COMMISSION VACANCY** for an independent chair person. Contact Suzanne Mitchell, Safeguarding Coordinator 0113 261 8069 [suzanne.mitchell@dioceseofleeds.org.uk](mailto:suzanne.mitchell@dioceseofleeds.org.uk). Closing date 30<sup>th</sup> Oct.

**REFRESHMENTS** are served in The Hall after Sunday morning Mass. Come & join us. All are welcome.

**WEEKLY COLLECTIONS** w/b 14<sup>th</sup> October: plate £222.12; envelopes £143.60; votive £10.87; Building fund £499.98; Standing Orders weekly average £610; Attendance 253