

# St. Mary's Catholic Church

A parish of Ampleforth Abbey

25 Bond End, Knaresborough, HG5 9AW

Fr. William Wright O.S.B. [william@ampleforth.org.uk](mailto:william@ampleforth.org.uk) 01423 862388

E-mail: [parish@stmarysknaresborough.org.uk](mailto:parish@stmarysknaresborough.org.uk) Web: [www.stmarysknaresborough.org](http://www.stmarysknaresborough.org)

[www.facebook.com/stmarysknaresborough](https://www.facebook.com/stmarysknaresborough) [www.twitter.com/st\\_marys\\_parish](https://www.twitter.com/st_marys_parish)

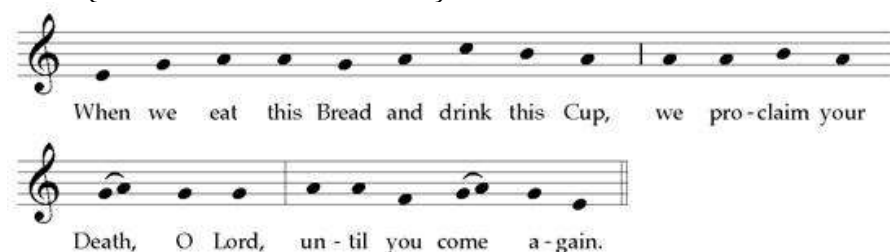
## CELEBRATIONS AND MASS INTENTIONS FOR THE WEEK

31<sup>ST</sup> WEEK OF ORDINARY TIME

Sunday cycle B/weekday cycle II

Day	Rank	Mass times	Mass Intention
Sun 11 <sup>th</sup> Nov	<b>THIRTY-SECOND SUNDAY IN ORDINARY TIME</b>	Sat 6.00 pm Sun 10.00 am Sun 5.00 pm	<b>Walter &amp; Shirley Morley Parish</b> <b>Donald Westmancoat</b>
Mon 12 <sup>th</sup> Nov	<b>Memorial: St Josaphat</b>	9.00 am No Service	
Tue 13 <sup>th</sup> Nov	<b>Feria</b>	Eucharistic Service 7.00 pm <i>in Chapel</i>	
Wed 14 <sup>th</sup> Nov	<b>Feria</b>	Eucharistic Service 9.00 am <i>in Chapel</i>	
Thu 15 <sup>th</sup> Nov	<b>Feria</b>	No service	
Fri 16 <sup>th</sup> Nov	<b>Feria</b>	Eucharistic Service 7.00 pm <i>in Chapel</i>	
Sat 17 <sup>th</sup> Nov	<b>Feria</b>	10.00 am No service	
Sun 18 <sup>th</sup> Nov	<b>THIRTY-THIRD SUNDAY IN ORDINARY TIME</b>	Sat 6.00 pm Sun 10.00 am Sun 5.00 pm	<b>Sheila McDonough Parish</b> <b>Paul O'Gara</b>

**MEMORIAL ACCLAMATION** (FOR USE THROUGHOUT YEAR B):



**ADORATION:** Each weekday beginning 45 minutes before Mass.

**THE DIVINE OFFICE** is recited twenty minutes before each weekday Mass

**PRAYER GROUP:** We are now meeting **2pm Wednesday** (Healing Prayer Group) for Adoration, Lectio Divina and prayers for inner or physical healing as required. For more information please contact Maureen 869264

**IN YOUR PRAYERS, PLEASE REMEMBER:** Harry Boucher, Torben Jacob Cartey, Victoria Fulcher, Dorothy Leachman, Eleanor Mayhew and all who are ill and those who care for them.

To protect the privacy of all our parishioners please could all prayer requests be re-requested to Fr William, preferably by email: [william@ampleforth.org.uk](mailto:william@ampleforth.org.uk)

**ST JOSEPH'S TABLE:** Collection of food for the homeless. Please put items in the box in the Atrium.

**PLEASE PRAY FOR:** Margaret Townsend, Jean Ledgeway, Mike Bruce, Joyce Anne Stein, William Smiles, Michael Peter, Dunne, Kathleen Blakey, Joseph O'Brien, Brian McGeough, Thomas Louis Akroyd and all whose anniversary of death occurs at this time.

### THE HOLY FATHER'S PRAYER INTENTIONS

That the language of love and dialogue may always prevail over the language of conflict.

AMPLEFORTH ABBEY TRUSTEES REG. CHARITY NO. 1026493

## THIRTY SECOND SUNDAY IN ORDINARY TIME



**NEXT SUNDAY'S READINGS:** Dan 12:1-3; Ps 15; Heb 10:11-14, 18; Mk 13:24-32

**WE WELCOME** Fr Michael who is celebrating Mass with us this weekend.

**THE POPE** has invited us all to visit the following website and use it to help us pray for the church [www.prayforthechurch.org](http://www.prayforthechurch.org)

**BEFORE MASS** Our three Sunday Masses have each a different character and offer parishioners a variety of choice. In the time before Mass begins Sat 6pm and Sun 5pm tend to be quiet and prayerful in the church, Sun 10am more socialising. All are welcome at any Mass including children and babes. And please feel free to use the side chapel before Mass for an alternative quiet and prayerful space.

**FUNDRAISING** events for your diary. Tuesday November 27<sup>th</sup> - Christmas Greenery, Amanda Kelly 07719 619915  
Sunday December 9<sup>th</sup> - Advent Lunch Maureen Harry 07949 779446  
Friday January 4<sup>th</sup> - Panto Jules Finn 07810430093

**INTER-FAITH WEEK** 11-18 November: Please pray this week for greater understanding between faiths. Further details from [www.interfaithweek.org](http://www.interfaithweek.org). Poster in the Atrium.

**FRIENDSHIP GROUP** next meets on Monday, 12<sup>th</sup> November from 1.30 until 3.00 pm in the Church Hall. It is intended then to meet weekly. Further information on poster in Atrium.

**BRADFORD CATHOLIC YOUTH CHOIR** 7.00 pm 15 Nov An evening of music at St Walburga's Church, Shipley

**DAY OF ADORATION AT LEEDS TRINITY:** Fri 16<sup>th</sup> Nov 8am-8pm. All are welcome but if you would like to volunteer to adore Jesus in the Blessed Sacrament please contact [michael.doddy@dioceseofleeds.org.uk](mailto:michael.doddy@dioceseofleeds.org.uk)

**LEISURE CENTRE** It will be St Mary's turn, week beginning Monday 19<sup>th</sup> November.

**LTU CATHSOC LECTURE** Sr. Linda on "The place of Religious Life in contemporary in Society" 23 Nov at 6.00 pm Leeds Trinity University.

**PARISH SVP** Next meeting, Monday 26<sup>th</sup> November, 7.15pm in the Parish Meeting Room

**DEMENTIA FRIENDLY CHRISTMAS CAROL SERVICE** 3.00 pm 8<sup>th</sup> December, Leeds Cathedral.

**THE NOVEMBER BOOK** Please enter the names of deceased family and friends to be remembered in our prayers and Masses during November until Advent.

**BISHOP WHEELER ACADEMY TRUST** is seeking to appoint Site Supervisors (St Joseph's Pudsey and St Joseph's Otley) and Teaching Assistants (St Mary's Menston), see the posters in the atrium for details.

**HINSLEY HALL VACANCIES** Duty Manager and a separate Receptionist post to help provide a high quality service to all its users. Please contact the [generalmanager@hinsley-hall.co.uk](mailto:generalmanager@hinsley-hall.co.uk) for more details.

**SCHOOL VACANCIES** Executive head teacher at St Winefride's and St John's Catholic Primary School, Bradford; KS2 teacher at St Mary's and St Peter's Catholic Primary School, Bradford. Contact schools for further details.

**WEEKLY COLLECTIONS** w/b 28<sup>th</sup> October: plate £273.82; envelopes £179.00; votive £29.82; Building fund £10.00 & £197.32; Standing Orders weekly average £610; Attendance 247

AMPLEFORTH ABBEY TRUSTEES REG. CHARITY NO. 1026493