

# St. Mary's Catholic Church

A parish of Ampleforth Abbey

25 Bond End, Knaresborough, HG5 9AW

Fr. William Wright O.S.B. [william@ampleforth.org.uk](mailto:william@ampleforth.org.uk) 01423 862388

E-mail: [parish@stmarysknaresborough.org.uk](mailto:parish@stmarysknaresborough.org.uk) Web: [www.stmarysknaresborough.org](http://www.stmarysknaresborough.org)

[www.facebook.com/stmarysknaresborough](https://www.facebook.com/stmarysknaresborough) [www.twitter.com/st\\_marys\\_parish](https://www.twitter.com/st_marys_parish)

## CELEBRATIONS AND MASS INTENTIONS FOR THE WEEK

1<sup>ST</sup> WEEK IN LENT

Sunday cycle C/weekday cycle I

Day	Rank	Mass times	Mass Intention
Sun 10 <sup>th</sup> Mar	<b>FIRST SUNDAY OF LENT</b>	Sat 6.00 pm Sun 10.00 am Sun 5.00 pm	<b>Parish Marguerite Jennings</b>
Mon 11 <sup>th</sup> Mar	<b>Feria</b>	9.00 am <i>in Chapel</i>	<b>Owen Emmett</b>
Tue 12 <sup>th</sup> Mar	<b>Feria</b>	9.00 am <i>in Chapel</i>	
Wed 13 <sup>th</sup> Mar	<b>Feria</b>	9.00 am	<b>Margaret Jean Weatherhead</b>
Thu 14 <sup>th</sup> Mar	<b>Feria</b>	No service	
Fri 15 <sup>th</sup> Mar	<b>Feria</b>	Eucharistic service 7.00 pm <i>in Chapel</i>	
Sat 16 <sup>th</sup> Mar	<b>Feria</b>	No service	
Sun 17 <sup>th</sup> Mar	<b>SECOND SUNDAY OF LENT</b>	Sat 6.00 pm Sun 10.00 am Sun 5.00 pm	<b>Sheila Houghton Parish Finlay David Harrity</b>

**BEFORE MASS** Our three Sunday Masses have each a different character and offer parishioners a variety of choice. The time before Mass begins Sat 6pm and Sun 5pm tend to be quiet and prayerful in the church, Sun 10am more socialising. All are welcome at any Mass including children and babes. And please feel free to use the side chapel before Mass for an alternative quiet and prayerful space.

**ADORATION:** Each weekday beginning 45 minutes before Mass. **THE DIVINE OFFICE** is recited twenty minutes before each weekday Mass

**SACRAMENT OF RECONCILIATION** Saturdays 10.30am to 11.00am in the chapel

**PRAYER GROUP:** We are now meeting **2pm Wednesday** (Healing Prayer Group) for Adoration, Lectio Divina and prayers for inner or physical healing as required. For more information please contact Maureen 869264

**IN YOUR PRAYERS, PLEASE REMEMBER:** Harry Boucher, Torben Jacob Cartey, Victoria Fulcher, Dorothy Leachman, Eleanor Mayhew, Eileen Pryor and all who are ill and those who care for them.

To protect privacy please could all prayer requests be re-requested to Fr William: [william@ampleforth.org.uk](mailto:william@ampleforth.org.uk)

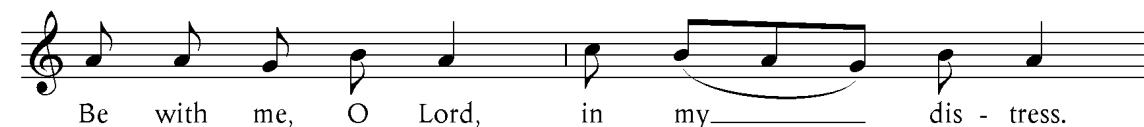
**ST JOSEPH'S TABLE:** Collection of food for the homeless in the area. Please put items in the box in the Atrium.

**PLEASE PRAY FOR:** Marguerite Jennings, Pat Eves and Owen Emmett recently deceased; Mike Cawthray, Doreen Watson, Violet Jordan, Beryl Dennis, John O'Brien, Con Shanahan, Sheila Condon, Frederick Richmond, Fr Theodore Rylance, Elfriede Allen and all whose anniversary of death occurs at this time.

### THE HOLY FATHER'S PRAYER INTENTIONS

That Christian communities, especially those who are persecuted, feel that they are close to Christ and have their rights respected.

## FIRST SUNDAY OF LENT



**NEXT SUNDAY'S READINGS:** Gen 15:5-12, 17-18; Ps 26; Phil 3:20-4:1; Lk 9:28b-36

**SATURDAY 16<sup>TH</sup> MARCH** No 10 am mass or 10.30am Reconciliation

**STATIONS OF THE CROSS** 6.15pm Fridays in Lent

**PARISH FRIENDSHIP GROUP** Meets Mondays, in the Church Hall, 1.30pm to 3.00 pm. Come and enjoy being part of a happy friendly gathering, with tea/coffee and cakes and optional gentle activities. Full details in the Atrium.

**SVP** Next meeting Monday 1<sup>st</sup> April 7.15pm in the Parish Meeting Room.

**ST PATRICK'S DAY QUIZ** Saturday 16<sup>th</sup> March in the Old School 7.30pm start, tickets £8.50 supper included. Licensed bar. Please prebook, contact: Jo: 07853 292607. Jules 07810 430093

**LENTEN RETREAT DAY** Choose either March 20<sup>th</sup> or March 23<sup>rd</sup> 10.00am-3.30pm, The Briery Retreat Centre, Ilkley, led by Fr Dennis Cassidy. A journey to Easter with Blessed John Henry Newman. £30 to include coffee, lunch and afternoon tea. To book please contact the Administrator on 01943 607287 or [briery@btconnect.com](mailto:briery@btconnect.com)

**HARROGATE DISTRICT OF SANCTUARY** A piano recital to raise refugee awareness and raise funds for the Sanctuary will be given by Margaret Fingerhut: 28<sup>th</sup> March at the Wesley Centre, Harrogate at 7.30 pm. See poster.

**THE CATHOLIC SCHOOLS APPEAL SERVICE** are recruiting panel members to hear appeals by parents for Diocesan school places. This is a voluntary role but travel expenses can be claimed - full training will be provided. Appeal panels consist of both lay members of the community and those from an educational background. For further information, please contact Emma on 0113 261 8040 or email [evangelisation.admin@dioceseofleeds.org.uk](mailto:evangelisation.admin@dioceseofleeds.org.uk)

**200 CLUB FEBRUARY WINNERS:** £40 2 E Dyer: £25 166 B Anderson: £20 128 E Mayhew: £15 33 M Pearson

**CHILDREN'S EASTER CLUB - IMAGINATORS** The CTIK annual Easter Club runs from 10am-12.30pm on Wednesday 24<sup>th</sup> April- Friday 26<sup>th</sup> April 2019. To sign up to help or to sign up your kids, please contact June Graham at [ctikeasterclub@gmail.com](mailto:ctikeasterclub@gmail.com) or see poster in atrium.

**VACANCY:** Deputy Principal Notre Dame Catholic Sixth Form College, Leeds. See poster in atrium.

**VACANCY:** Year 4 class teacher at Ss Peter & Paul Catholic Primary School Yeadon. See poster in atrium.

**VACANCY:** The Briery Retreat Centre, Ilkley, is looking to appoint a part-time cook for 15 hours per week working over 3 or 4 shifts. Good rate of pay and excellent working conditions. For further information about the role please call the Administrator on 01943 607287 or email: [briery@btconnect.com](mailto:briery@btconnect.com)

**A RETREAT WITH A DIFFERENCE:** A Foyer de Charité Retreat will be held at Hinsley Hall from Sunday 21<sup>st</sup> July (6pm) - Saturday 27<sup>th</sup> July (2pm). The theme is God's Plan for the Fullness of Time, and the preacher will be Mgr Keith Barltrop. Foyer retreats are held mainly in silence, with three talks a day. For further information or to book a place, contact Mgr Barltrop: [keithbarltrop@rcdow.org.uk](mailto:keithbarltrop@rcdow.org.uk) or 07879 953953.

**WEEKLY COLLECTIONS** w/b 3<sup>rd</sup> March: plate £204.89; envelopes £183.00; votive £5.00; Building fund £139.41; Standing Orders weekly average £610.00; International Outreach £40.15; Attendance 191.